

INSTALLATION MANUAL:

COR-1408200

JEEP WRANGLER 3.25" REAR BUMP STOPS
(2007-2018, JK)



INCLUDED ITEMS

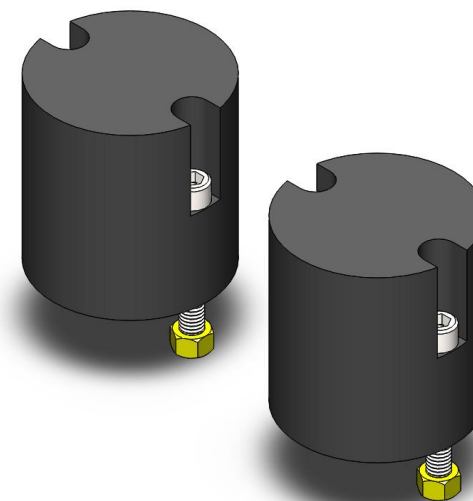
1408200 Jeep Wrangler 3.25" Front Bump Stops (2007-2018, JK)

QTY	Part Number	Description	Class/Grade
2	PLA-HDPE	Jeep Wrangler 3.25" Bump Stop	N/A
4	93312	3/8"-16 x 2.25" Hex Drive Zinc Finish Alloy Steel Socket Cap Screw	ASTM A574
4	36406	3/8"-16 Yellow Zinc Finish Finished Hex Nut	Grade 8

Product Notes and Features:

The Jeep Rear Bump Stops are designed to limit suspension compression. Using these extensions prevents damage to your suspension components when tackling rugged terrain, specifically during a "bottom-out" driving condition.

- Designed to meet the demands of rugged terrain and daily driving
- Included Grade 8 hardware with a corrosion-resistant finish
- Provides vehicle with 3.25" of fixed bump stop over-compression protection
- Mounts outside of the coil on the OEM spring pad, no spring removal required.



INSTALLATION INSTRUCTIONS

TOOLS REQUIRED FOR INSTALLATION

- Hex keys 5/16"
- Standard sockets and wrenches 9/16"

*****Take this product to a licensed professional if you are hesitant about the installation process!*****

1. Locate the mounting plate on the rear axle. Place the bump stop on the mounting plate and align the bolt holes.

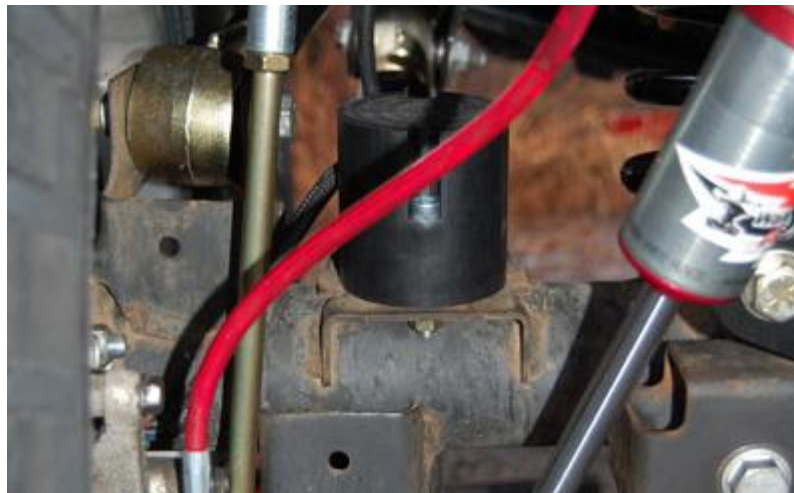


Figure 1: Bump stop placed on mounting plate

INSTALLATION INSTRUCTIONS

2. Install the two socket head cap screws on either side of the bump stop. Install the 3/8" nuts using a 9/16" socket or wrench. Tighten the hardware with a 5/16" hex key until the bump stop compresses slightly.

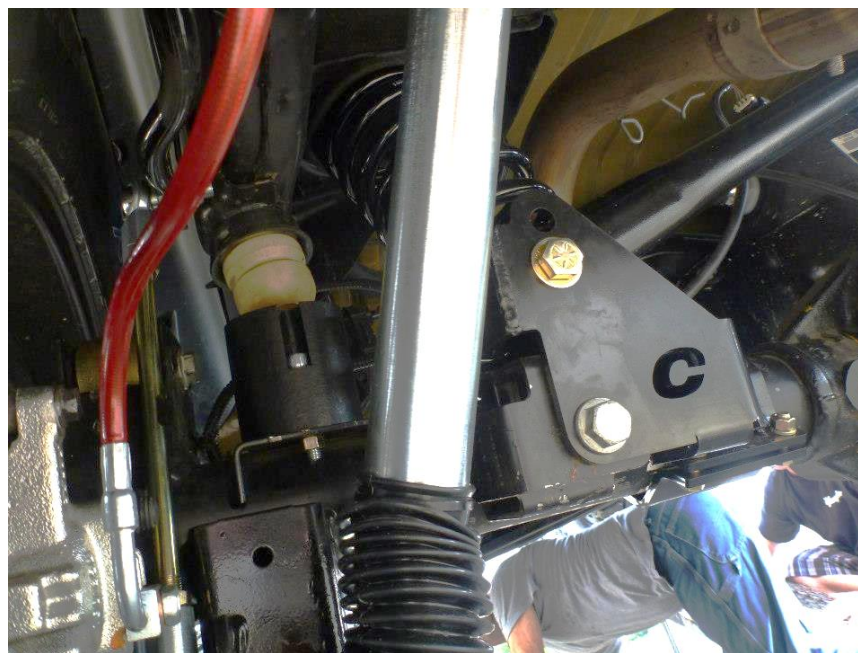


Figure 2: Bump stop installed on JK axle

TIP: Tape the nut to the wrench to get the threads started, as the nut may be hard to hold under the spring perch hole.

INSTALLATION INSTRUCTIONS

3. The installation is complete. Please ensure that any/all bolts holding the bump stop down to the perch are securely fastened. You may now flex out the vehicle to determine if more or less bump stop is needed for your specific setup.



Figure 3: Installation complete

POST-INSTALLATION CHECKLIST:

- Bump stop hardware torqued to 30 ft-lbs, or until plastic begins to bulge
- Required amount of bump stop is achieved, and suspension up-travel is properly limited

