

INSTALLATION MANUAL:

COR-5109110

Jeep Wrangler Adjustable Sway Bar End Links
Rear (2007-2018 JK and 2018+ JL)
Front (2007-2018 JK)



REV: A | DATE: 03/27/2026 | AUTH: KW05

INCLUDED ITEMS

5109110 Jeep Wrangler Adjustable Rear Sway Bar End Links (2007+, JK/JL)				
QTY	Part Number	Description	Class/Grade	ID Number
4	AMP-TE-H502-12MM-W	Tie Rod End 1/2"-20 UNF Female End M12x1.5 Male End	N/A	1
8	FAS-36260	1/2"-20 Clear Zinc Finish Steel Jam Nut	Grade 5	2
2	BTM-5109001	1/2-20 x 13.00" Double End Stud, 5.375" Thread	N/A	3
3	FAS-99842997	29mm OD x 13mm ID Black Phosphate Finish Steel Conical Spring Washer	N/A	4

Product Notes and Features:

- Properly adjust your 2007+ Jeep Wrangler JK/JL sway bars
- For use in the rear of JK (2007-2018) and JL (2018+) Wranglers
- For use in the front of JK (2007-2018)
- Features four tie rod ends to make necessary axle and sway bar adjustments
- No cutting or modifications required on the vehicle
- Intended to be installed/used in conjunction with COR 1.5", 2.5", and 3.5" JK lift kits; however, the links are adjustable and can be used universally in many applications
- Included conical washers for achieving a greater clamping force on the rod-end



See the Sway Bar Quick Guide for more information on our sway bar link products

DISCLAIMER

WARNING:

Suspension systems and their components are designed to enhance your vehicle's off-road performance. This may cause your vehicle to handle differently, on and off-road. Always wear your seatbelt and take extra care when driving a modified vehicle. Failure to do so can result in loss of control which may result in a rollover causing serious injury, or even death to the driver and/or passengers of the vehicle. Regular maintenance and consistent inspections are required to keep your modified vehicle safe and functioning properly. These suspension systems and any components should be installed by certified technicians only. Attempts to install these products without proper knowledge can lead to poor performance, or possible failure, which may jeopardize the safety of the vehicle and its passengers. The installer is responsible for proper installation ensuring a safe and properly functioning vehicle. Take extra care when operating a modified vehicle and thoroughly inspect your vehicle before and after every off-road use.

Read the instruction set in its entirety before attempting the installation.

NOTE:

This product may require general welding, fabrication, and automotive mechanic skills. Welding should only be done by a competent welder. Clayton Off Road implies no guarantees or warranties and is not liable for improper installation. Some grinding and fitment may be required when installing this product. Every vehicle varies slightly, and some fabrication and/or modification may be required.

ATTENTION:

It is the customer's responsibility to thoroughly inspect all received parts to ensure they are assembled correctly and fully welded. Please carefully examine all weld seams and verify that bolt-through holes are properly aligned. Some Clayton Off Road products are permanent, non-removable, weld-on solutions. **If a defect or issue is found after installation, especially with permanent weld-on components, it may be difficult or impossible to correct.** Inspecting the part(s) received beforehand helps prevent unnecessary and avoidable complications.

ATTENTION: TORQUE SPECIFICATION

When working on any vehicle, it is good practice to torque suspension/weight-bearing components while the vehicle is resting under its load. This instruction set, as well as any other Clayton Off Road instruction set, assumes the installer will tighten any suspension-related components properly, to the recommended torque specification, when the vehicle is resting safely under its own weight.

INSTALLATION INSTRUCTIONS

*****Take this product to a licensed professional if you are hesitant about the installation process!*****

The following instructions apply to the listed components below:

- 5109110 Jeep Wrangler Adjustable Front Sway Bar End Links (2007+,JK/JL)

We strongly recommend having basic mechanic's hand tools, sockets, wrenches, vehicle jacks and stands, and other common tools readily available. Installing an aftermarket lift kit is a detailed process, and having the right tools on hand will ensure a smoother installation.

As always, feel free to contact us anytime during your installation – you can count on us to help!

COR-5109110

5109110 Installation Tools Required:

- 14, 18mm socket/wrench
- 3/4" wrench
- 6mm hex key
- Adjustable wrench
- Impact drill
- Torque wrench
- Hacksaw or cutting tool

INSTALLATION INSTRUCTIONS

Take this product to a licensed professional if you are hesitant about the installation process!

1. Position the vehicle on flat ground. Make sure that the vehicle is at ride height, then remove the old sway bar end links on both sides. If the end links are original, you will need an 18mm socket or wrench. Remove both the lower link bolts at the axle, and the nuts retaining the end links to the sway bar.



Figure 1: Jeep JK passenger front sway bar to be removed

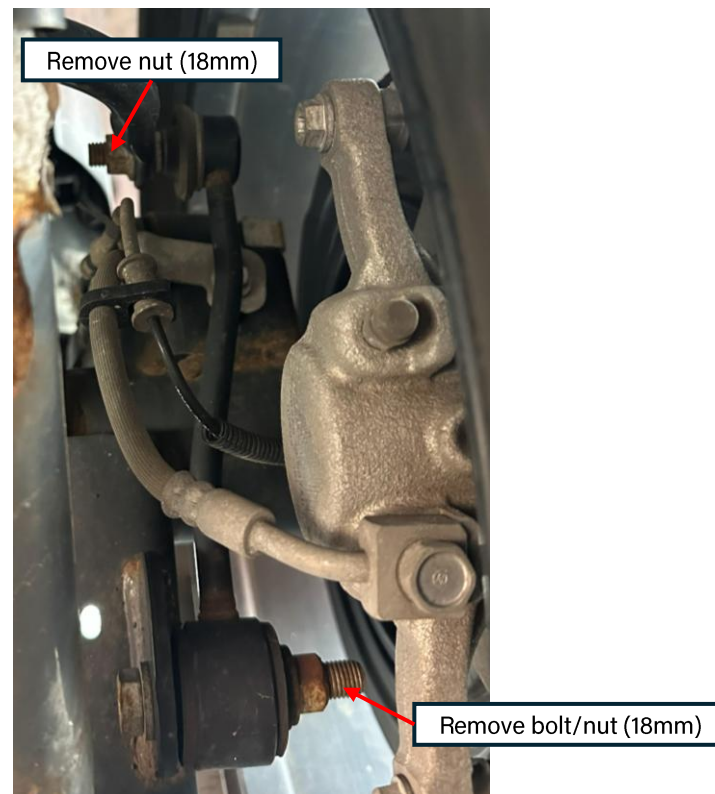


Figure 2: Passenger-side Jeep JL rear sway bar to be removed

INSTALLATION INSTRUCTIONS

2. Using the recommended measurements below, cut the supplied threaded rods to length. Refer to the table to determine how much of the rod should be cut (off both ends), depending on your lift height. These are good starting recommendations and are not meant to serve as final lengths. Adjustments and fine-tuning will be required.

Table 1: Threaded rod lengths based on lift height

Lift Height	Stock	1.5" Lift		2.5" Lift		3.5" Lift		4.5" Lift	
Component		Center Length	Cut Each End	Center Length	Cut Each End	Center Length	Cut Each End	Center Length	Cut Each End
JK Front Sway Bar Link	5.250	8-1/4"	3-7/16"	9-1/4"	2-15/16"	10-1/4"	2-7/16"	11-1/4"	1-15/16"
JK Rear Sway Bar Link	8.750	10-3/4"	2-3/16"	11-3/4"	1-5/8"	12-3/4"	1-3/16"	13-3/4"	5/8"
JL Front Sway Bar Link	5.0625	8-1/4"	3-7/16"	9-1/4"	2-15/16"	10-1/4"	2-7/16"		
JL Rear Sway Bar Link	8.75	10-3/4"	2-3/16"	11-3/4"	1-5/8"	12-3/4"	1-3/16"		
JT Front Sway Bar Link	5.063	8-1/4"	3-7/16"	9-1/4"	2-15/16"	10-1/4"	2-7/16"		
JT Rear Sway Bar Link	10.625	12-5/8"	1-1/4"	13-5/8"	3/4"	14-5/8"	1/4"		

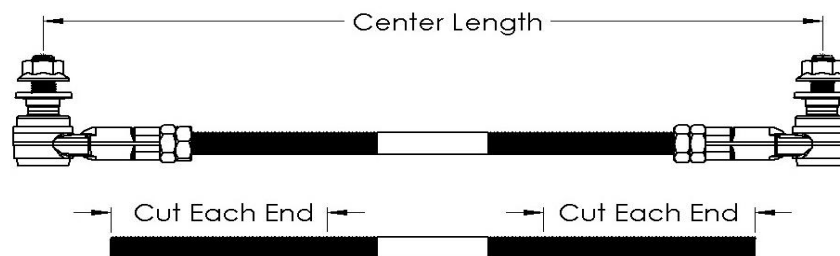


Figure 2: Threaded rod lengths "cut each end" and "center length" measurements

NOTE: The provided "Center Length" is **NOT** the length of the cut rod, but rather the measurement from each tie rod end stud.

INSTALLATION INSTRUCTIONS

3. Bevel the cut edges of the threaded rod to help assist in initial thread engagement with the new rod ends. This will ease in sway bar end link assembly and installation.



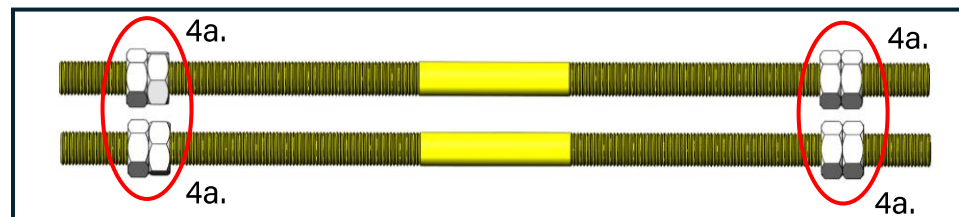
Figure 3: Beveled edge of sway bar rod with sway bar rod end

INSTALLATION INSTRUCTIONS

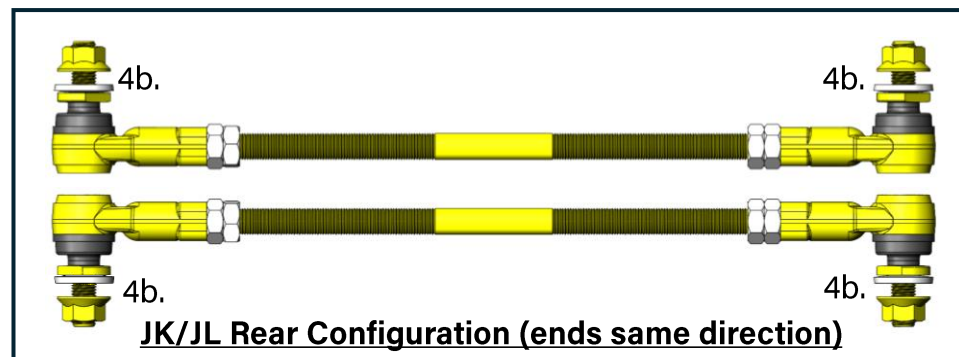
4. Assemble the end links. Follow the steps below for a guided assembly. **Note the orientation of the rod ends depending on your application.**

4a. Install the supplied nuts on all four rods as shown. Use x2 nuts for each threaded section.

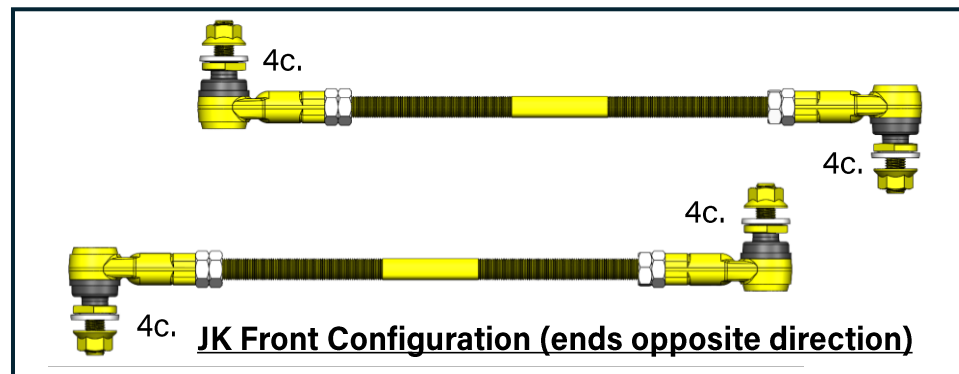
*****For 1.5" lift kits, you only need to install x1 nut per side.**



4b. **JK/JL REAR ONLY:** Install the x4 supplied rod ends. Screw on the rod ends equally until the desired center length from Step 2 is met. Then, bottom out the jam nuts at the rod end. Do not tighten yet. Make sure that the rod ends face the **same way** on each end link, as seen in the photo to the right.



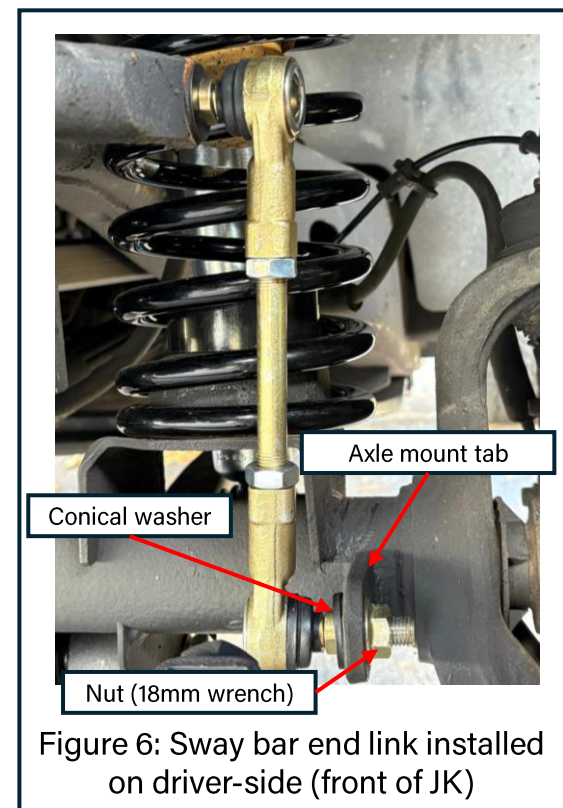
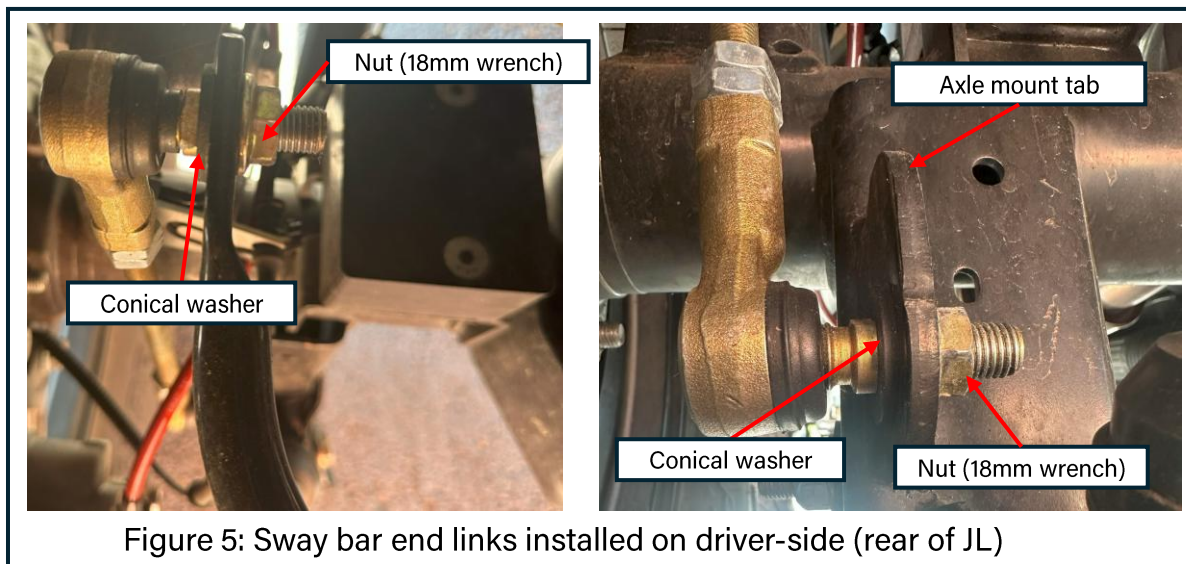
4c. **JK FRONT ONLY:** Install the x4 supplied rod ends. Screw on the rod ends equally until the desired center length from Step 2 is met. Then, bottom out the jam nuts at the rod end. Do not tighten yet. Make sure that the rod ends face the **opposite** way on each end link, as seen in the photo to the right.



INSTALLATION INSTRUCTIONS

5. Install the new end links into the vehicle. Install the end links on the axle tab, as shown below. Install the conical washers with the cupped-side facing the sway bar, **not the end link**. Install the supplied nut on the opposite side of the sway bar. **Note the orientation of the sway bar rod ends. Return to step 4 to clarify the orientation of the rod ends based on your application.**

- For rear installation on the JK/JL, make sure that the end links are on the inside of the brake lines, closest to the rotor.
- For front JK installation, follow the OEM connection points and install the sway bar in the orientation that it fits.



INSTALLATION INSTRUCTIONS

6. Tighten all four connection points (all the rod-end nuts) to 90-100 lb-ft. Use a 14mm box wrench on the wrench flat to hold the rod end stud in place while **tightening the nut with an 18mm socket/wrench**. You may also choose to use a 6mm hex key at the tip of the rod end to drive the nut tight. See the photo below.



Figure 5: Rod end tightening options

INSTALLATION INSTRUCTIONS

7. Tighten all of the jam nuts against the rod ends. Use an adjustable wrench to hold the rod end, and a 3/4" wrench to tighten the jam nuts. Tighten the nut closest to the rod end first to jam the rod end into position, then the second nut to lock it down.

Torque the jam nuts to 64 ft-lbs.

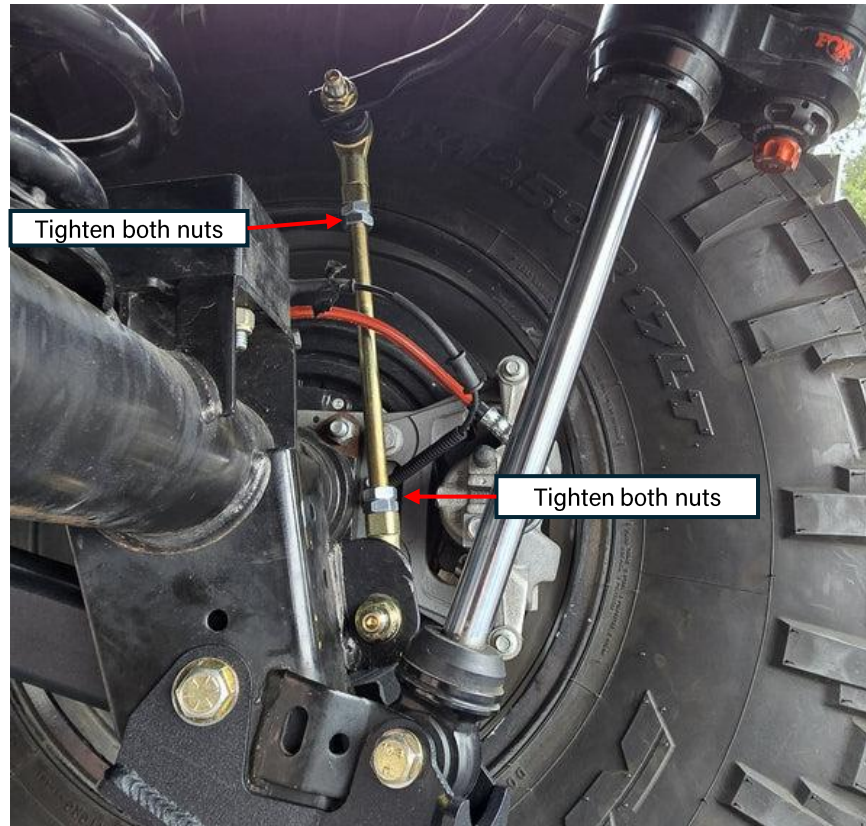


Figure 6: Threaded rod jam nuts tightened down

INSTALLATION INSTRUCTIONS

8. Double-check that the sway bar is either parallel to the ground or slightly above the ground horizontally. It is important to allow for full sway bar articulation without binding at full flex. If the end links are too short, the sway bar could invert at full extension, causing damage to the vehicle. Make sure that this sway bar angle is set properly. It is safer to have the end links longer to create a 5-10 degree angle above the ground horizontal line.

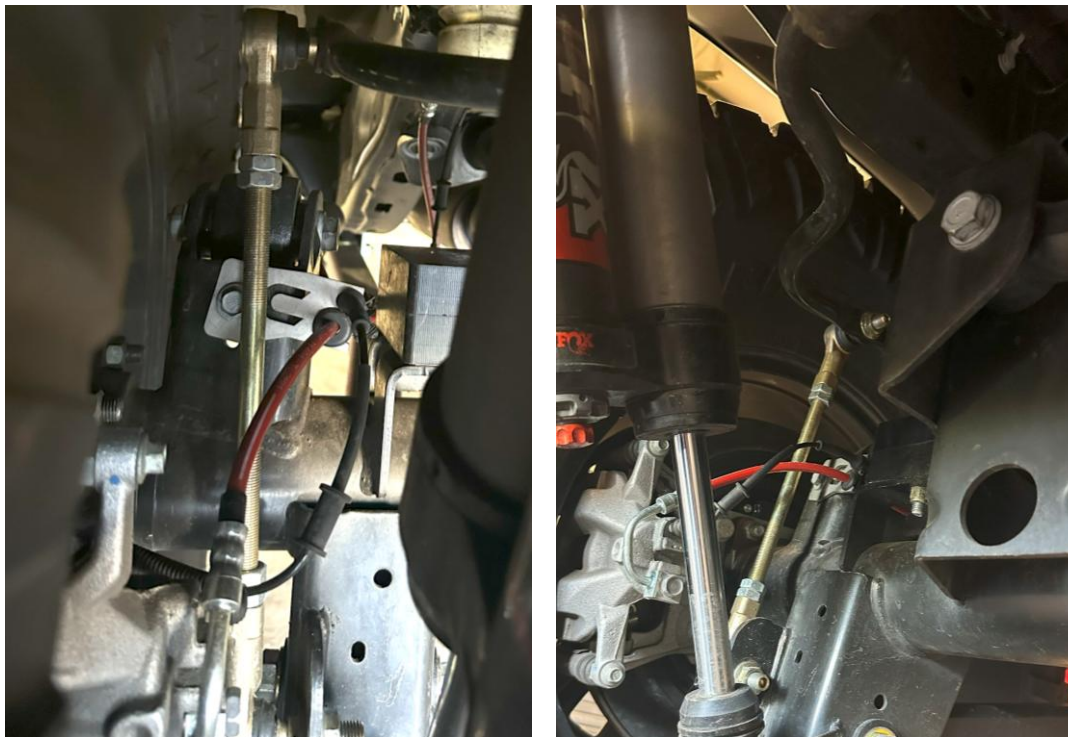


Figure 7: Correct sway bar angle

INSTALLATION INSTRUCTIONS

9. The installation is now complete. Please review the post-installation checklist before driving your vehicle.



POST-INSTALLATION CHECKLIST:

- Rear sway bar is either flat/parallel to the ground, or angled slightly above the horizontal plane (see photos and details from Step 8)
- All end link connection points are torqued to 90-100 lb-ft
- Jam nuts are tightened together and locking rod ends in position
- Retorque after 500 miles of driving

