

# INSTALLATION MANUAL:

Jeep Wrangler 4XE OVERLAND+ and PREMIUM Lift Kits  
All Lift Heights



# LIFT KIT OVERVIEW - 3009615

\*\*\*Please review the following item list for your purchased kit so you can become familiar with the included items\*\*\*

3009615 Jeep Wrangler 4XE Overland+ 1.5" Lift Kit (2021+, JL)	
SKU	Description
1509150	Jeep Wrangler 1.5" Front Coil Springs (2018+, JL)
1509156	Jeep Wrangler 1.5" HD Dual Rate Rear Coil Springs (2018+, JL)
1409101	Jeep Wrangler 1-1/4" Front Bump Stops (2018+, JL)
1409201	Jeep Wrangler 1-2" Rear Bump Stops (2018+, JL)
5109100	Jeep Wrangler Adjustable Sway Bar End Links (2018+, JL)
5109110	Jeep Wrangler Adjustable Sway Bar End Links ( 2007+, JK/JL)
1709100	Jeep Wrangler Overland+ Short Front Lower Control Arms (2018+, JL)
1709101	Jeep Wrangler Overland+ Short Front Upper Control Arms (2018+, JL)
1709102	Jeep Wrangler Overland+ Short Rear Lower Control Arms (2018+, JL)
1709103	Jeep Wrangler Overland+ Short Rear Upper Control Arms (2018+, JL)
4509100	Jeep Wrangler Adjustable Front Track Bar (2018+, JL)
4509110	Jeep Wrangler Adjustable Rear Track Bar (2018+, JL)

The following document provides general, basic instructions for the items listed above. Please navigate to a specific product page on our website for more in-depth instructions if you require a more specific, step-by-step guide

# LIFT KIT OVERVIEW - 3009625

\*\*\*Please review the following item list for your purchased kit so you can become familiar with the included items\*\*\*

3009625 Jeep Wrangler 4XE Overland+ 2.5" Lift Kit (2021+, JL)	
SKU	Description
1508250	Jeep Wrangler 2.5" Front Coil Springs (2018+, JL)
1509256	Jeep Wrangler 2.5" HD Dual Rate Rear Coil Springs (2018+, JL)
1408100	Jeep Wrangler 3.25 Front Bump Stops (2018+, JL)
1409200	Jeep Wrangler 3" Rear Bump Stops (2018+, JL)
5109100	Jeep Wrangler Adjustable Sway Bar End Links (2018+, JL)
5109110	Jeep Wrangler Adjustable Sway Bar End Links ( 2007+, JK/JL)
1709100	Jeep Wrangler Overland+ Short Front Lower Control Arms (2018+, JL)
1709101	Jeep Wrangler Overland+ Short Front Upper Control Arms (2018+, JL)
1709102	Jeep Wrangler Overland+ Short Rear Lower Control Arms (2018+, JL)
1709103	Jeep Wrangler Overland+ Short Rear Upper Control Arms (2018+, JL)
4509100	Jeep Wrangler Adjustable Front Track Bar (2018+, JL)
4509110	Jeep Wrangler Adjustable Rear Track Bar (2018+, JL)

The following document provides general, basic instructions for the items listed above. Please navigate to a specific product page on our website for more in-depth instructions if you require a more specific, step-by-step guide

# LIFT KIT OVERVIEW - 3009635

\*\*\*Please review the following item list for your purchased kit so you can become familiar with the included items\*\*\*

3009635 Jeep Wrangler 4XE Overland+ 3.5" Lift Kit (2021+, JL)	
SKU	Description
1508350	Jeep Wrangler 3.5" Front Coil Springs (2018+, JL)
1509356	Jeep Wrangler 3.5" HD Dual Rate Rear Coil Springs (2018+, JL)
1408100	Jeep Wrangler 3.25 Front Bump Stops (2018+, JL)
1409200	Jeep Wrangler 3" Rear Bump Stops (2018+, JL)
5109100	Jeep Wrangler Adjustable Sway Bar End Links (2018+, JL)
5109110	Jeep Wrangler Adjustable Sway Bar End Links ( 2007+, JK/JL)
1709100	Jeep Wrangler Overland+ Short Front Lower Control Arms (2018+, JL)
1709101	Jeep Wrangler Overland+ Short Front Upper Control Arms (2018+, JL)
1709102	Jeep Wrangler Overland+ Short Rear Lower Control Arms (2018+, JL)
1709103	Jeep Wrangler Overland+ Short Rear Upper Control Arms (2018+, JL)
4509100	Jeep Wrangler Adjustable Front Track Bar (2018+, JL)
4509110	Jeep Wrangler Adjustable Rear Track Bar (2018+, JL)
1309501	Jeep Wrangler Stainless Steel Front Brake Line Bracket Extensions (2018+, JL)

The following document provides general, basic instructions for the items listed above. Please navigate to a specific product page on our website for more in-depth instructions if you require a more specific, step-by-step guide

# LIFT KIT OVERVIEW - 2909615

\*\*\*Please review the following item list for your purchased kit so you can become familiar with the included items\*\*\*

2909615 Jeep Wrangler 4XE Premium 1.5" Lift Kit (2021+, JL)	
SKU	Description
1509150	Jeep Wrangler 1.5" Front Coil Springs (2018+, JL)
1509156	Jeep Wrangler 1.5" HD Dual Rate Rear Coil Springs (2018+, JL)
1409101	Jeep Wrangler 1-1/4" Front Bump Stops (2018+, JL)
1409201	Jeep Wrangler 1-2" Rear Bump Stops (2018+, JL)
5109100	Jeep Wrangler Adjustable Sway Bar End Links (2018+, JL)
5109110	Jeep Wrangler Adjustable Sway Bar End Links ( 2007+, JK/JL)
1809100	Jeep Wrangler Premium Short Front Lower Control Arms (2018+, JL)
1809101	Jeep Wrangler Premium Short Front Upper Control Arms (2018+, JL)
1809102	Jeep Wrangler Premium Short Rear Lower Control Arms (2018+, JL)
1809103	Jeep Wrangler Premium Short Rear Upper Control Arms (2018+, JL)
4509100	Jeep Wrangler Adjustable Front Track Bar (2018+, JL)
4509110	Jeep Wrangler Adjustable Rear Track Bar (2018+, JL)

The following document provides general, basic instructions for the items listed above. Please navigate to a specific product page on our website for more in-depth instructions if you require a more specific, step-by-step guide

# LIFT KIT OVERVIEW - 2909625

\*\*\*Please review the following item list for your purchased kit so you can become familiar with the included items\*\*\*

2909625 Jeep Wrangler 4XE Premium 2.5" Lift Kit (2021+, JL)	
SKU	Description
1508250	Jeep Wrangler 2.5" Front Coil Springs (2018+, JL)
1509256	Jeep Wrangler 2.5" HD Dual Rate Rear Coil Springs (2018+, JL)
1408100	Jeep Wrangler 3.25 Front Bump Stops (2018+, JL)
1409200	Jeep Wrangler 3" Rear Bump Stops (2018+, JL)
5109100	Jeep Wrangler Adjustable Sway Bar End Links (2018+, JL)
5109110	Jeep Wrangler Adjustable Sway Bar End Links ( 2007+, JK/JL)
1809100	Jeep Wrangler Premium Short Front Lower Control Arms (2018+, JL)
1809101	Jeep Wrangler Premium Short Front Upper Control Arms (2018+, JL)
1809102	Jeep Wrangler Premium Short Rear Lower Control Arms (2018+, JL)
1809103	Jeep Wrangler Premium Short Rear Upper Control Arms (2018+, JL)
4509100	Jeep Wrangler Adjustable Front Track Bar (2018+, JL)
4509110	Jeep Wrangler Adjustable Rear Track Bar (2018+, JL)

The following document provides general, basic instructions for the items listed above. Please navigate to a specific product page on our website for more in-depth instructions if you require a more specific, step-by-step guide

# LIFT KIT OVERVIEW - 2909635

\*\*\*Please review the following item list for your purchased kit so you can become familiar with the included items\*\*\*

2909635 Jeep Wrangler 4XE Premium 3.5" Lift Kit (2021+, JL)	
SKU	Description
1508350	Jeep Wrangler 3.5" Front Coil Springs (2018+, JL)
1509356	Jeep Wrangler 3.5" HD Dual Rate Rear Coil Springs (2018+, JL)
1408100	Jeep Wrangler 3.25 Front Bump Stops (2018+, JL)
1409200	Jeep Wrangler 3" Rear Bump Stops (2018+, JL)
5109100	Jeep Wrangler Adjustable Sway Bar End Links (2018+, JL)
5109110	Jeep Wrangler Adjustable Sway Bar End Links ( 2007+, JK/JL)
1809100	Jeep Wrangler Premium Short Front Lower Control Arms (2018+, JL)
1809101	Jeep Wrangler Premium Short Front Upper Control Arms (2018+, JL)
1809102	Jeep Wrangler Premium Short Rear Lower Control Arms (2018+, JL)
1809103	Jeep Wrangler Premium Short Rear Upper Control Arms (2018+, JL)
4509100	Jeep Wrangler Adjustable Front Track Bar (2018+, JL)
4509110	Jeep Wrangler Adjustable Rear Track Bar (2018+, JL)
1309501	Jeep Wrangler Stainless Steel Front Brake Line Bracket Extensions (2018+, JL)

The following document provides general, basic instructions for the items listed above. Please navigate to a specific product page on our website for more in-depth instructions if you require a more specific, step-by-step guide

# DISCLAIMER

## WARNING:

Suspension systems and their components are designed to enhance your vehicle's off-road performance. This may cause your vehicle to handle differently, on and off-road. Always wear your seatbelt and take extra care when driving a modified vehicle. Failure to do so can result in loss of control which may result in a rollover causing serious injury, or even death to the driver and/or passengers of the vehicle. Regular maintenance and consistent inspections are required to keep your modified vehicle safe and functioning properly. These suspension systems and any components should be installed by certified technicians only. Attempts to install these products without proper knowledge can lead to poor performance, or possible failure, which may jeopardize the safety of the vehicle and its passengers. The installer is responsible for proper installation ensuring a safe and properly functioning vehicle. Take extra care when operating a modified vehicle and thoroughly inspect your vehicle before and after every off-road use.

Read the instruction set in its entirety before attempting the installation.

## NOTE:

This product may require general welding, fabrication, and automotive mechanic skills. Welding should only be done by a competent welder. Clayton Off Road implies no guarantees or warranties and is not liable for improper installation. Some grinding and fitment may be required when installing this product. Every vehicle varies slightly, and some fabrication and/or modification may be required.

## ATTENTION:

It is the customer's responsibility to thoroughly inspect all received parts to ensure they are assembled correctly and fully welded. Please carefully examine all weld seams and verify that bolt-through holes are properly aligned. Some Clayton Off Road products are permanent, non-removable, weld-on solutions. **If a defect or issue is found after installation, especially with permanent weld-on components, it may be difficult or impossible to correct.** Inspecting the part(s) received beforehand helps prevent unnecessary and avoidable complications.

## ATTENTION: TORQUE SPECIFICATION

When working on any vehicle, it is good practice to torque suspension/weight-bearing components while the vehicle is resting under its load. This instruction set, as well as any other Clayton Off Road instruction set, assumes the installer will tighten any suspension-related components properly, to the recommended torque specification, when the vehicle is resting safely under its own weight.

# CONTROL ARM OVERVIEW

\*\*\*Please review the following information so you can become familiar with our purchasable options\*\*\*



## OVERLAND PLUS

Designed for the daily driver/weekend warrior. Features dual-durometer, maintenance-free bushings for comfort on-road and capability on the trails. One of our two available suspension systems that utilize a unique mid-arm design for perfecting suspension geometry. Fully adjustable, 100% bolt on, and Made-In-The-USA with a Lifetime Warranty.



## PREMIUM SERIES

Designed for the off-road enthusiast. Features both maintenance-free bushings and forged Johnny Joint adjusters for maximum versatility and flex. One of our two available suspension systems that utilize a unique mid-arm design for perfecting suspension geometry. Fully adjustable, 100% bolt on, and Made-In-The-USA with a Lifetime Warranty.

\*\*\*Arms, frame brackets, and hardware are identical, meaning you can swap to a different series at any point\*\*\*

# CONTROL ARM LENGTHS

Please refer to the table below for minimum, maximum, and recommended control arm lengths. These lengths are recommendations and should only serve as a starting point for axle positioning and dialing in pinion/caster angle. **The following measurements are given as "eye-to-eye" lengths (center-to-center of joints). The desired caster angle should be somewhere between 4.5 - 6 degrees.** These are **NOT** intended as final measurements. Due to many variables, final adjustments should be made once all components are installed, then fine-tuned for your specific vehicle.

Table 1: COR Control Arm Length Specifications

Control Arm Type / Series	Minimum	1.5" Lift	2.5" Lift	3.5" Lift	4.5" Lift	Maximum
1709100 Jeep Overland+ Short Front Lower Arms	$23 - \frac{7}{8}$ "	$24 - \frac{3}{16}$ "	$24 - \frac{5}{16}$ "	$24 - \frac{1}{2}$ "	$24 - \frac{3}{4}$ "	$25 - \frac{9}{16}$ "
1709101 Jeep Overland+ Short Front Upper Arms	$19 - \frac{3}{4}$ "	$20 - \frac{3}{16}$ "	$20 - \frac{1}{4}$ "	$20 - \frac{3}{8}$ "	$20 - \frac{9}{16}$ "	$21 - \frac{1}{8}$ "
1709102 Jeep Overland+ Short Rear Lower Arms	$19 - \frac{9}{16}$ "	20"	20"	20"	20"	$21 - \frac{1}{8}$ "
1709103 Jeep Overland+ Short Rear Upper Arms, 4-Door	$17 - \frac{5}{16}$ "	$17 - \frac{1}{2}$ "	$17 - \frac{1}{2}$ "	$17 - \frac{1}{2}$ "	$17 - \frac{1}{2}$ "	$18 - \frac{11}{16}$ "
Jeep Overland+ Short Rear Upper Arms, 2-Door		$17 - \frac{7}{8}$ "	$17 - \frac{7}{8}$ "	$17 - \frac{7}{8}$ "	$17 - \frac{7}{8}$ "	
1809100 Jeep Premium Short Front Lower Arms	24"	$24 - \frac{3}{16}$ "	$24 - \frac{5}{16}$ "	$24 - \frac{1}{2}$ "	$24 - \frac{3}{4}$ "	$24 - \frac{7}{8}$ "
1809101 Jeep Premium Short Front Upper Arms	$19 - \frac{5}{8}$ "	$20 - \frac{3}{16}$ "	$20 - \frac{1}{4}$ "	$20 - \frac{3}{8}$ "	$20 - \frac{9}{16}$ "	$22 - \frac{1}{4}$ "
1809102 Jeep Premium Short Rear Lower Arms	$19 - \frac{13}{16}$ "	20"	20"	20"	20"	$20 - \frac{9}{16}$ "
1809103 Jeep Premium Short Rear Upper Arms, 4-Door	$17 - \frac{7}{16}$ "	$17 - \frac{1}{2}$ "	$17 - \frac{1}{2}$ "	$17 - \frac{1}{2}$ "	$17 - \frac{1}{2}$ "	$18 - \frac{11}{16}$ "
Jeep Premium Short Rear Upper Arms, 2-Door		$17 - \frac{7}{8}$ "	$17 - \frac{7}{8}$ "	$17 - \frac{7}{8}$ "	$17 - \frac{7}{8}$ "	

# FRONT-END INSTALLATION

The following instructions are a generic guide to installing the front-end components. Please navigate to a specific product page for more in-depth instructions if you require a more specific, step-by-step guide



# INSTALLATION INSTRUCTIONS

\*\*\*Take this product to a licensed professional if you are hesitant about the installation process!\*\*\*

The following instructions apply to the listed components below:

- Front Coil Springs (1.5", 2.5", 3.5", 4.5")
- Front Adjustable Track Bar
- Front Control Arms (Overland+ or Premium)
- Front Bump Stops
- Front Sway Bar End Links
- Front Brake Line Extension Brackets (for 3.5"+ kits only)

**The following instructions provide a basic guide for installing the front-end components for the mid-arm lift kit!**

If you purchased items separately or swapped in other components, your installation process will vary.

We strongly recommend having basic mechanic's hand tools, sockets, wrenches, vehicle jacks and stands, and other common tools readily available. Installing an aftermarket lift kit is a detailed process, and having the right tools on hand will ensure a smoother installation.

**As always, feel free to contact us at any point during your installation - you can count on us to help!**

# INSTALLATION INSTRUCTIONS

## TOOLS REQUIRED FOR INSTALLATION

- *Basic hand tools*
- *Hex key set*
- *Metric wrench/socket set*
- *Standard wrench/socket set*
- *Large box wrenches* (Large adjustable OR 1-1/2", 1-7/8")
- *Adjustable wrench*
- *Torque wrench*
- *Jack stands and/or vehicle lift*

1. Position the vehicle either on the ground or on a lift. For this installation, it is recommended that the vehicle be supported by the frame. Support the front axle with two additional jack stands. Remove the front tires and set aside.



Figure 1: Vehicle supported by lift and jack stands

**\*\*\*Photos of control arm adjusters in the following photos may not match your selected series, but the installation remains the same!\*\*\***

# INSTALLATION INSTRUCTIONS

2. Remove the OEM transmission guard skid plate/cross bar using an 18mm socket. Put this member and the hardware off to the side for now.

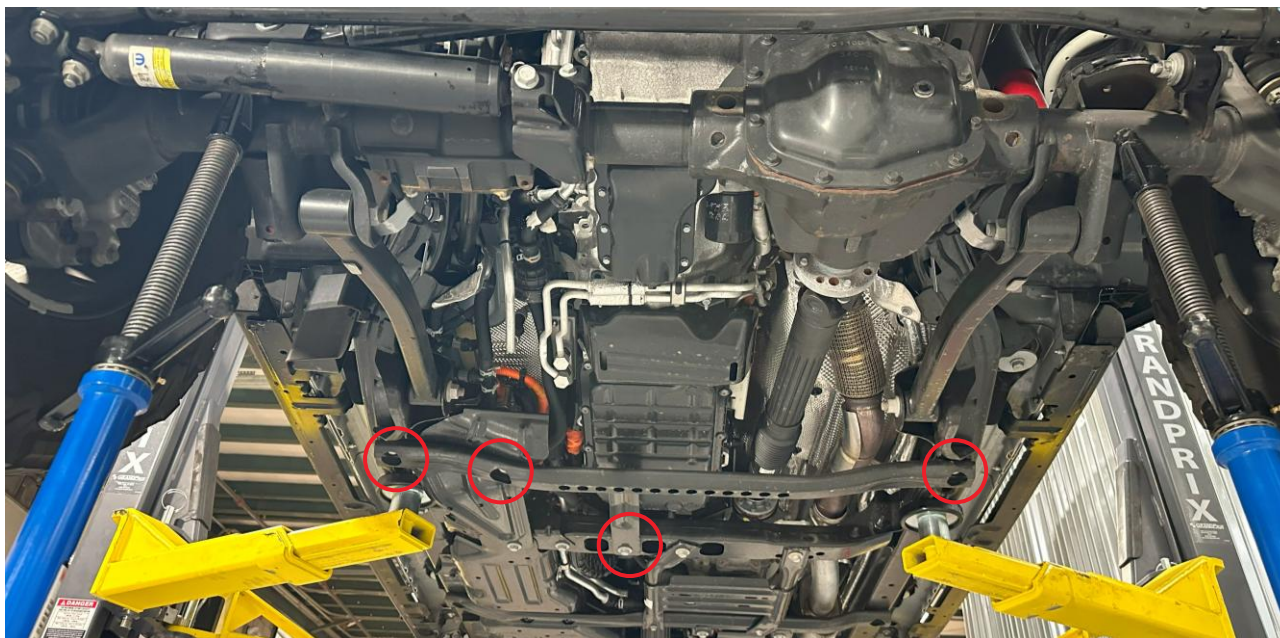


Figure 2: Transmission guard skid plate/cross bar to be removed (JL 4XE)

# INSTALLATION INSTRUCTIONS

3. Remove the factory front sway bar end-links. The socket size may vary depending on which vehicle, year, or aftermarket components you may already have installed. **Use an 18mm socket/wrench if OEM.** Put the passenger axle hardware aside and tuck the sway bar up and out of the way.

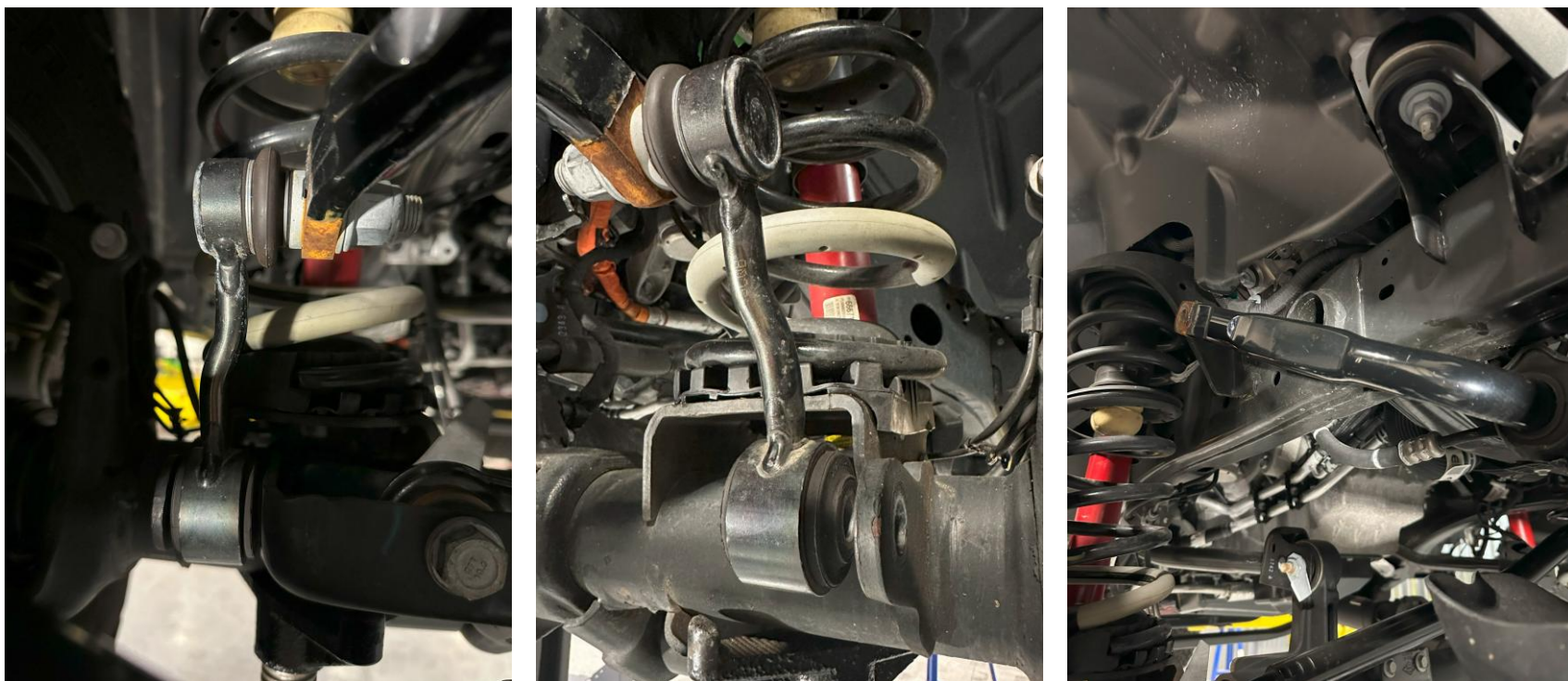


Figure 3: Front passenger and driver-side sway bar end link to be removed, with sway bar tucked up and away

# INSTALLATION INSTRUCTIONS

4. Remove the lower shock bolts using an 18mm socket. Save the hardware and put it aside. Move to the top of the shocks and remove the top shock bolts with an 18mm socket. It may be hard to get to, so push the fender liner out of the way and use a socket extension. You may need to notch or cut the fender liner with a knife/blade to obtain enough clearance. Remove the shocks completely and put them aside.

**NOTE: Clayton Off Road provides a replacement M12-1.75mm bolt for the front lower shock bolt. The bolt is provided with our lower control arms, COR-1709100 or COR-1809100. Refer to the control arm product instructions for more details.**



Figure 4: Front driver/passenger lower shock bolts removed



Figure 5: Front upper passenger shock bolt removed

# INSTALLATION INSTRUCTIONS

5. Remove the brake line bracket off the front lower control arms using a 15mm socket and let the bracket hang. Then, remove the front upper control arm heat shields from both sides. Two, 10mm bolts retain each heat shield. One bolt is located on the side, the other on the top (hidden). The top bolt is hard to get to, so use a small ratchet or ratcheting socket.



Figure 6: Front driver/passenger lower brake line mount removed



Figure 7: Front upper control arm heat shields to be removed

**NOTE:** You can cut off the control arm heat shields if you cannot reach the top 10mm bolt, as the shield will not be reused.

**TIP:** Remove the upper brake line bracket from the frame to ensure that the brake lines do not strain when the axle is lowered. You may also remove all the christmas-tree plastic clips that retain the ABS cable.

# INSTALLATION INSTRUCTIONS

6. Remove the front factory track bar. Start with the frame bracket bolt (21mm) and then the axle bolt (21mm).

Unplug the differential sensor, and remove the breather tube. Also, remove the plastic push-clip from the upper factory control arm. Put the hardware aside, as it will be reused.



Figure 8: Front factory track bar bolts locations (left) and wiring harness/breather hose and plastic clips (right)

# INSTALLATION INSTRUCTIONS

7. Loosen the control arm bolts in the front end, **but do not remove them**. You will need 18mm, 21mm, and 24mm sockets. **Make sure that the axle remains supported. Try to minimize any axle shift that may occur during this process.**

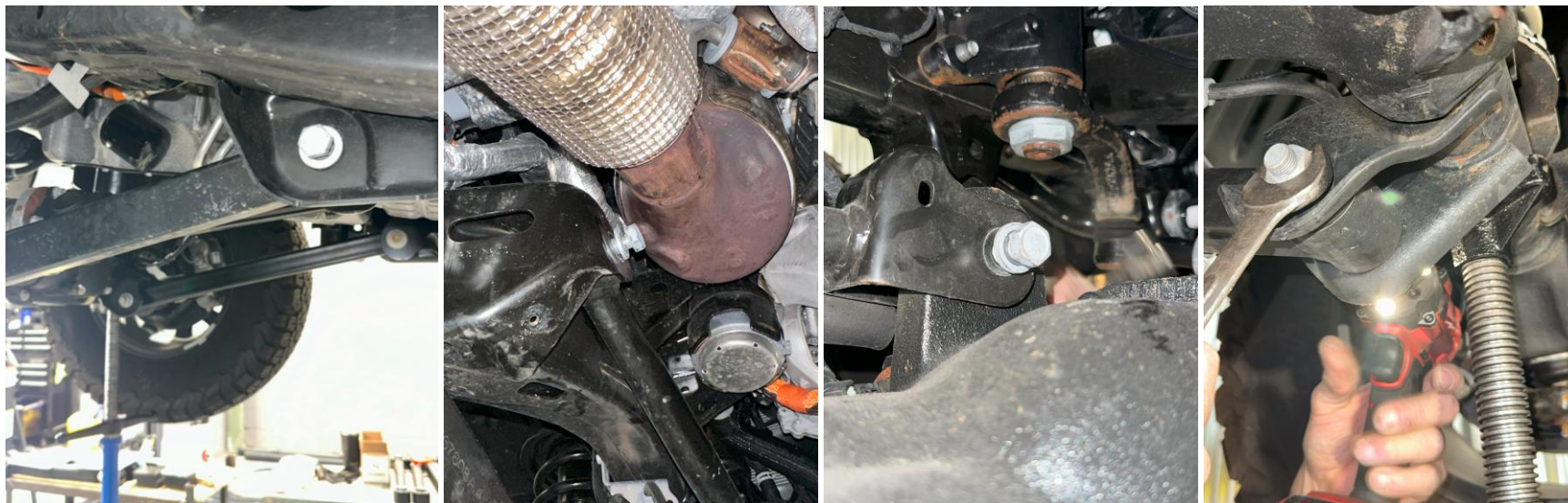


Figure 9: Lower/upper frame-side control arm bolts, and lower/upper axle-side control arm bolts

# INSTALLATION INSTRUCTIONS

8. Droop the axle by lowering the supporting jack stands (or raising the vehicle) and remove the factory springs to install the new bump stops. Use the included hardware and use a  $\frac{5}{16}$ " hex key and  $\frac{9}{16}$ " wrench. Complete both sides at this time. **You may tighten the bump-stop hardware at this time. Retain the spring isolator, as it will be reused.**



Figure 10: Axle drooped with old springs removed, and bump stops installed

**TIP:** Tape the nut to the wrench to get the threads started, as the nut may be hard to hold at the spring perch hole.

# INSTALLATION INSTRUCTIONS

9. Install the new front springs. **The last two digits etched on the front coils should read xxxxx50.** The front coils for this kit are **NOT** side-specific. Install the new springs while the axle is still dropped. Make sure that the springs are set properly on the coil perch and are retained in the upper spring mount. **Ensure the spring isolator is installed at this time.**

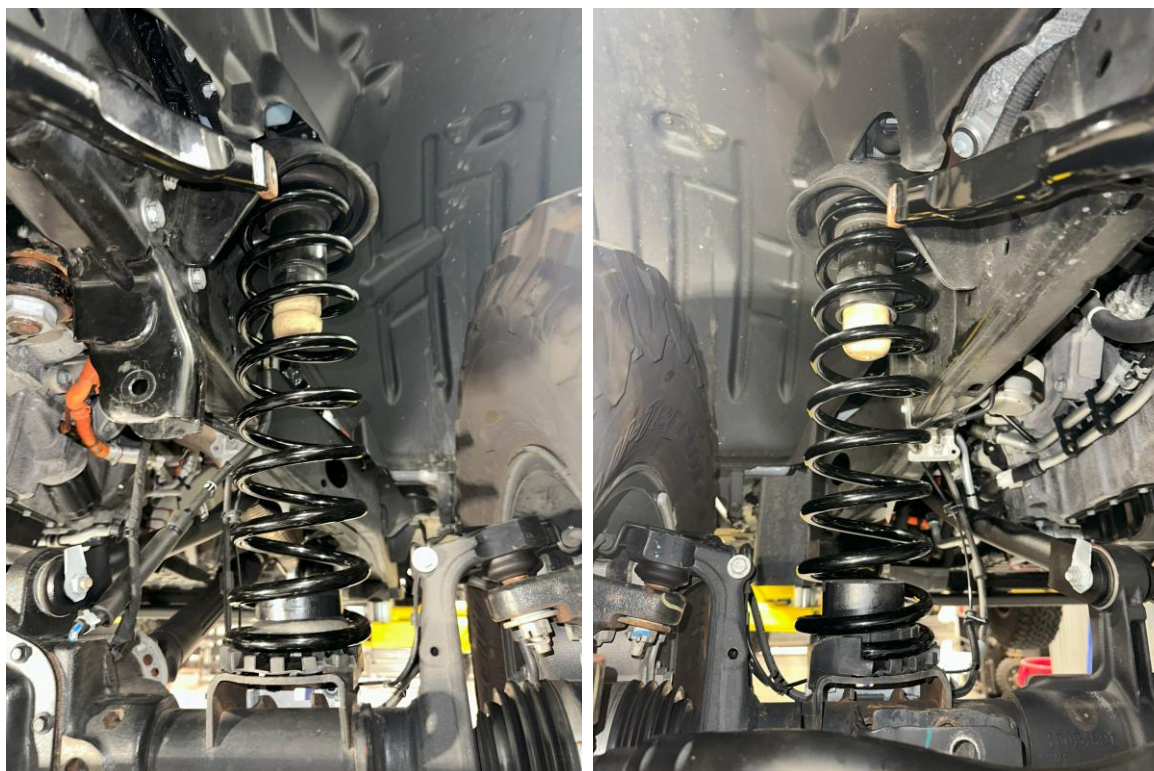


Figure 11: New springs installed and seated properly

# INSTALLATION INSTRUCTIONS

10. Re-install the front shocks or install new shocks. Install the upper bolt first, then the lower axle bolt. Use original hardware, unless your new shocks came with new hardware. If the aftermarket shocks came with a piggyback reservoir, install them at this time. **Do not torque yet.**

**NOTE: In Figure 12 below, the provided M12-1.75mm bolts were used with the bolt head facing the tires at the lower shock mounts. These bolts are provided to give proper clearance for the new lower square control arms.**

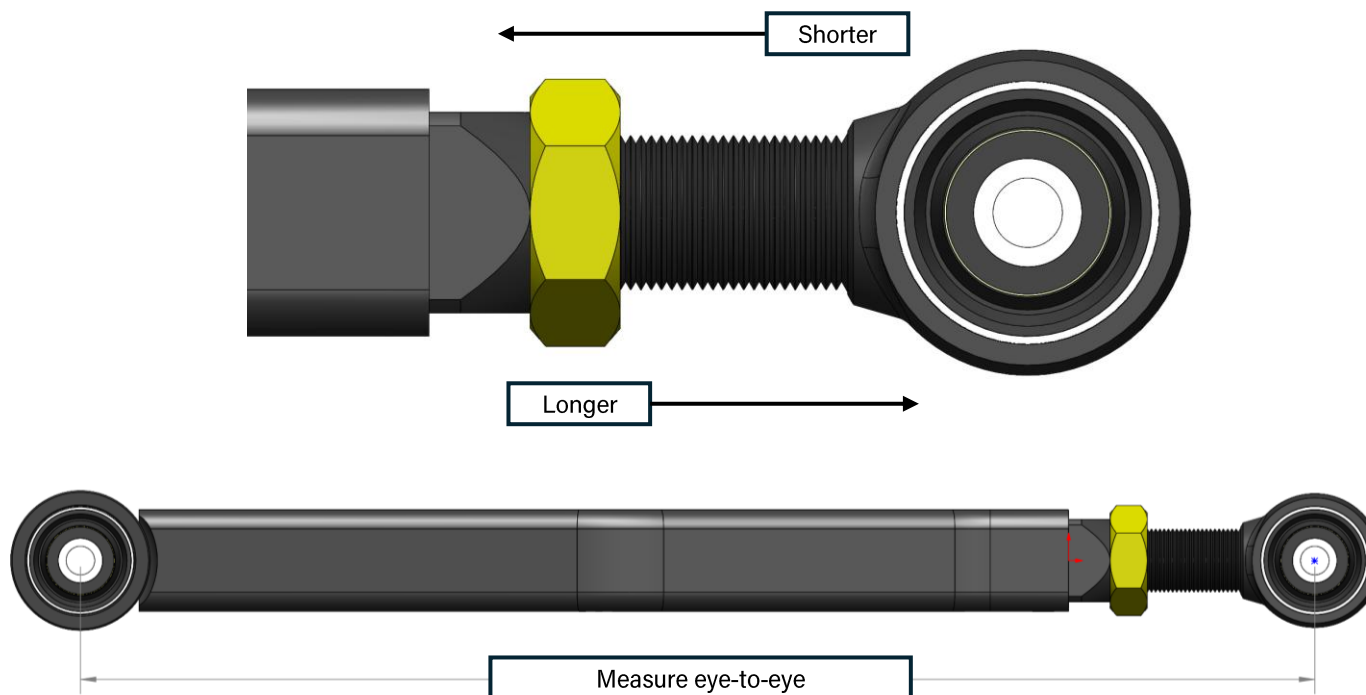


Figure 12: Front shock top and bottom bolt installed loosely

# INSTALLATION INSTRUCTIONS

11. Determine the appropriate length of the new control arms based on your vehicle's ride height and your desired pinion and caster angles. Use the lengths provided at the beginning of these instructions as a starting point or reference our **JL Suspension Quick Guide**. **For this lift kit, the front uppers are round, and the front lowers are square.**

Adjust the end-forging by screwing it in or out. **Measure the length from eye-to-eye, or center of bushing to center of bushing.** When the desired length is met, spin the jam nut down to the control arm to lock the forging into position.



# INSTALLATION INSTRUCTIONS

12. Remove the control arms **on the driver-side first**. Install the new lower control arm with the bend in the arm providing clearance for the tire. The adjusters should be located on the frame-side. Then, install the driver-side upper control arm. **The upper arms ARE side-specific**. When installed properly, the bends in the arms should be pointing downward and in, away from the frame of the vehicle. **See our Control Arm Quick Guide for more information. Do not torque yet.**

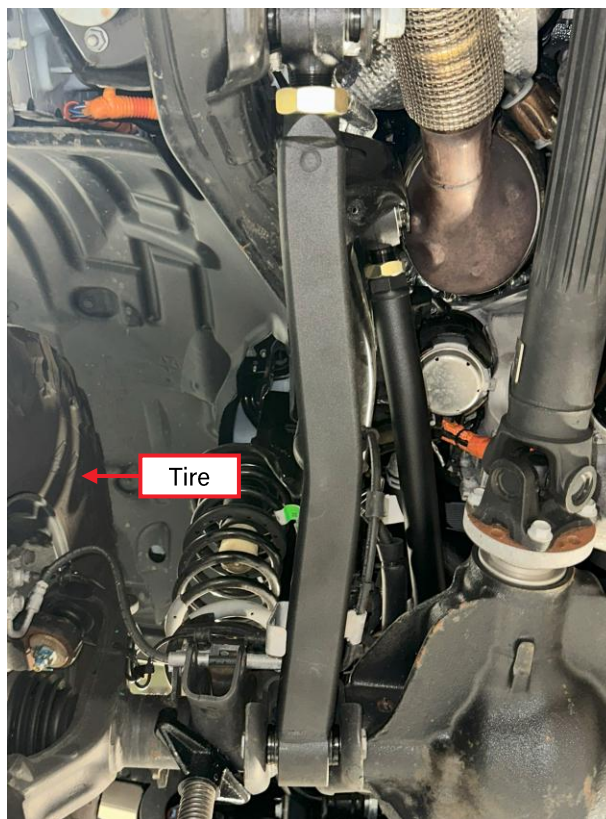


Figure 13: New driver-side control arms installed with original hardware

# INSTALLATION INSTRUCTIONS

13. Remove the control arms **on the passenger side**. Install the new lower control arm with the bend in the arm providing clearance for the tire. The adjusters should be located on the frame-side. Then, install the driver-side upper control arm. **The upper arms ARE side-specific**. When installed properly, the bends in the arms should be pointing downward and in, away from the frame of the vehicle. **See our Control Arm Quick Guide for more information. Do not torque yet.**

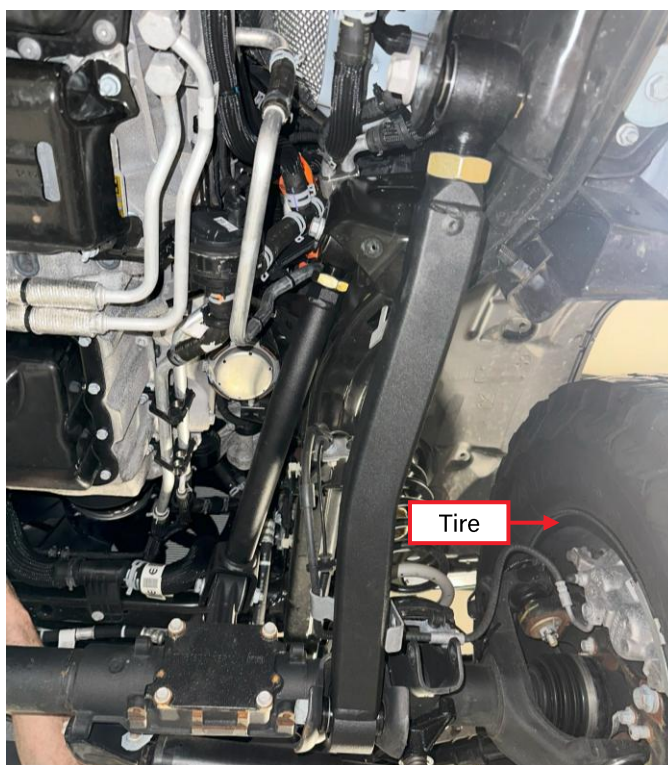


Figure 14: New passenger-side control arms installed with original hardware

# INSTALLATION INSTRUCTIONS

14. Reattach the brake line brackets and all of the plastic christmas-tree clips. Use the provided self-tapping screw that is already installed in the new control arms to secure the bracket. Reuse the mounting bolt for the brake bracket at the coil bucket, and the frame.

**For lift kits with 3.5"+, please use the supplied brake line extension bracket as seen in the photo on the right.**

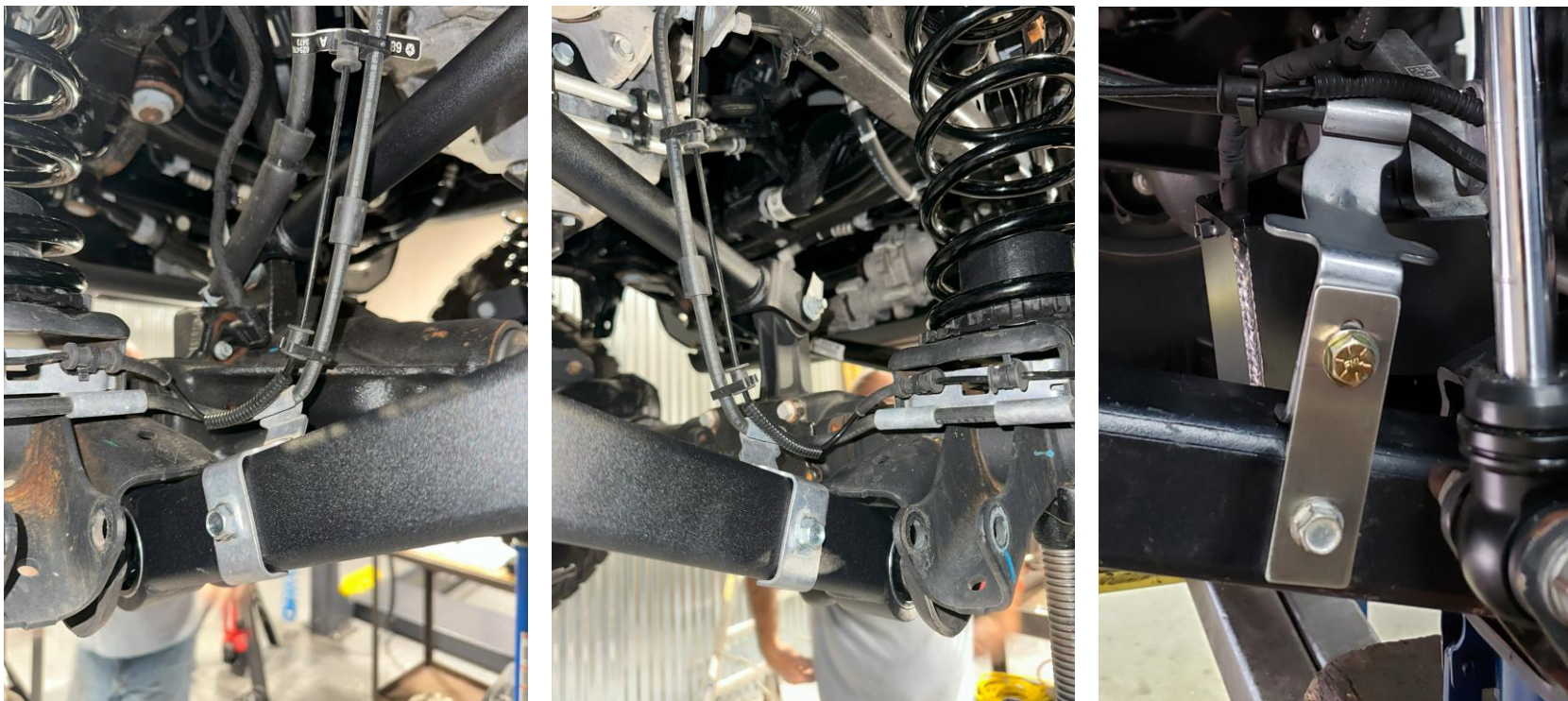


Figure 15: Brake line brackets secured (Brake line extension bracket on far right, only supplied in 3.5"+ kits)

# INSTALLATION INSTRUCTIONS

15. Install the new front track bar. Follow the **JL Suspension Quick Guide** for more information such as starting lengths based on coil height. You can find this quick guide on our website under any JL lift kit listing, or details at the end of these instructions.

**Do not torque yet. Install the axle bolt first, then the frame bolt using the original hardware.**

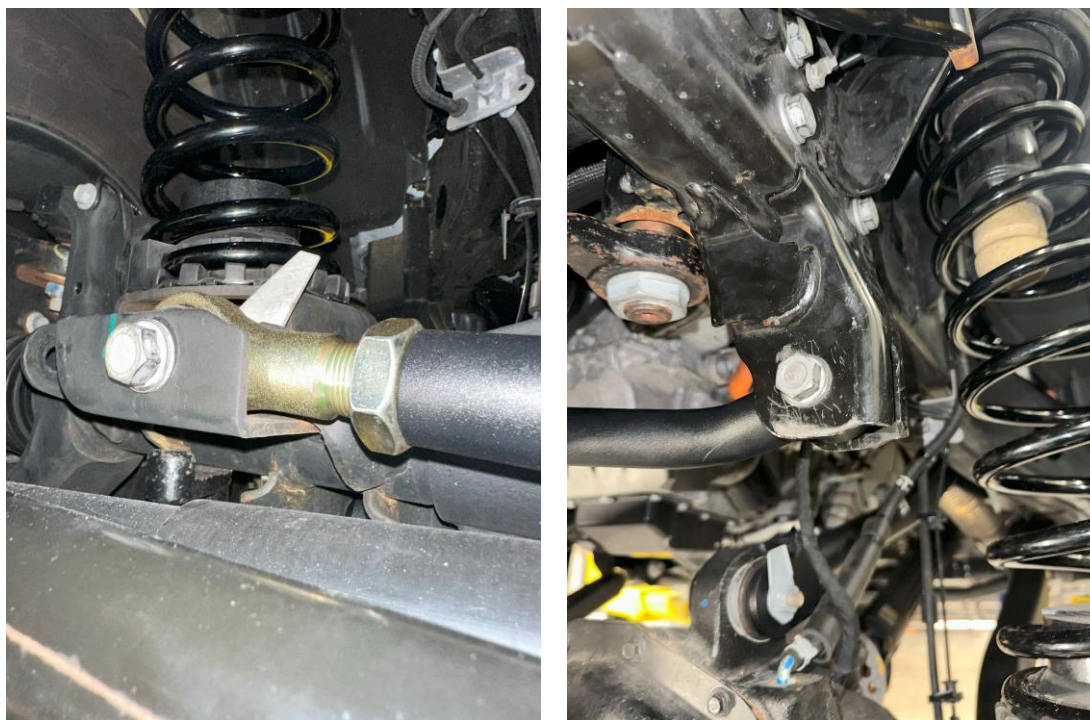


Figure 16: New front track bar installed

# INSTALLATION INSTRUCTIONS

16. Cut the new sway bar rods to the recommended length at each end following the **Sway Bar Quick Guide**. You can find this quick guide on our website, or details at the end of these instructions. Assemble the sway bar end-links and use a 6mm hex key and an 18mm wrench to install. Reuse the factory bolt for the passenger axle-side connection with the Heim joint.

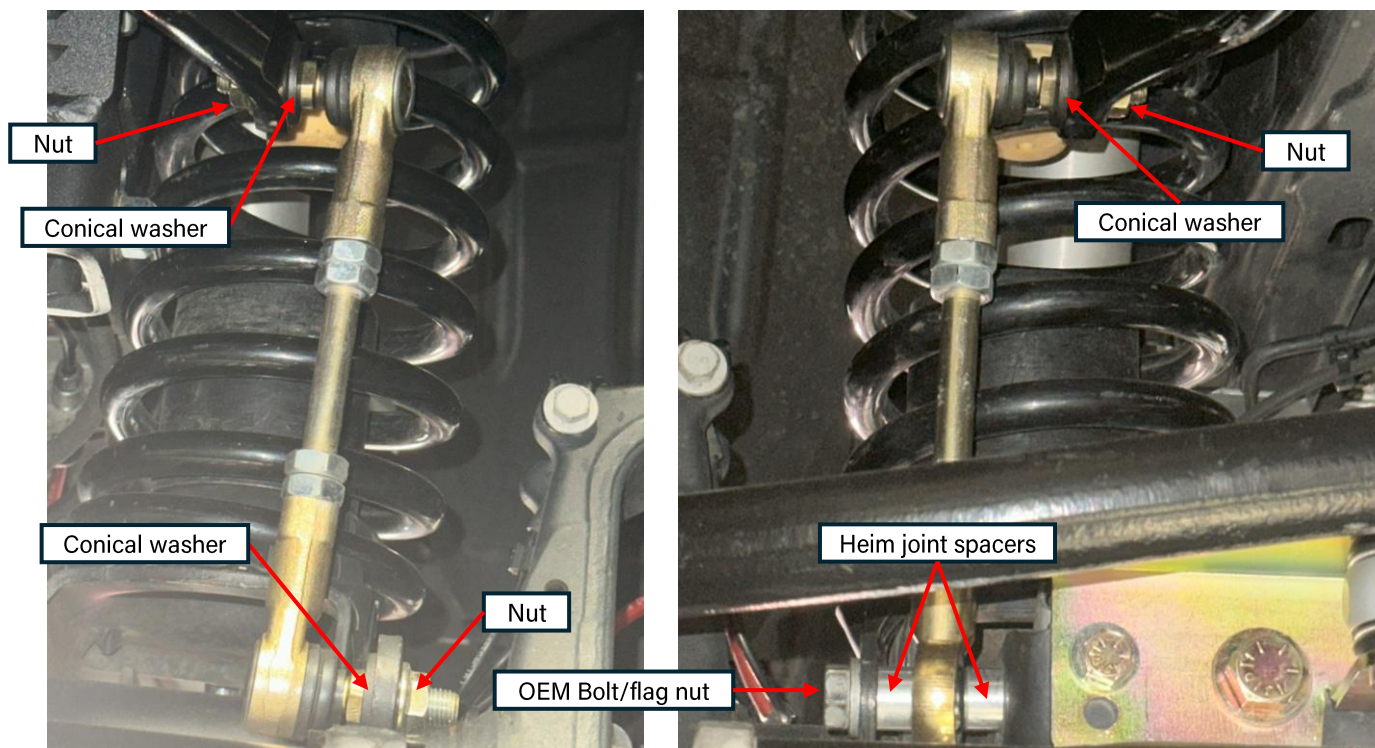


Figure 17: Front driver-side and passenger side sway bar end link proper orientation

**\*\*\*Conical washers installed with the concave side facing towards the sway bar, NOT the link!\*\*\***

# INSTALLATION INSTRUCTIONS

17. Reinstall the front axle wiring harness and breather hose. Use pliers to pinch the hose clip and slip the hose over the stem.

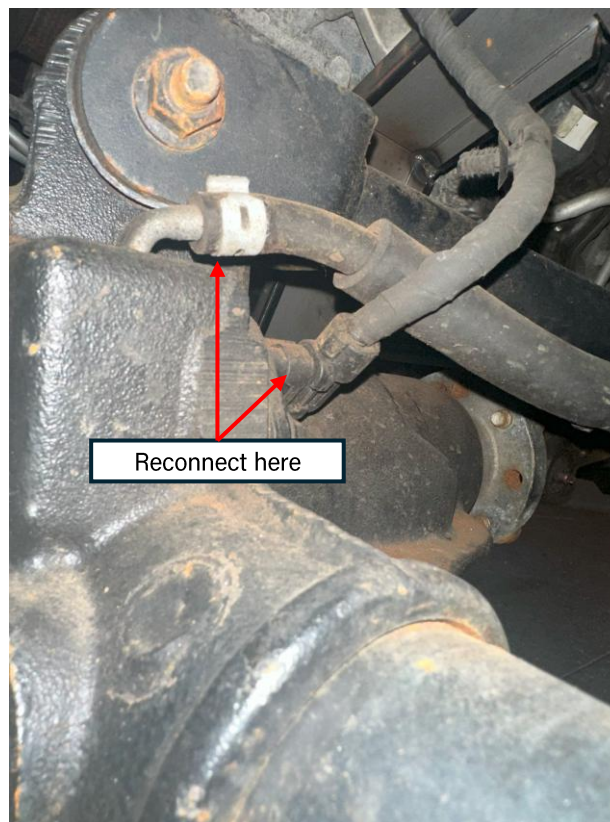


Figure 18: Front axle wiring harness/breather hose reconnected

# REAR-END INSTALLATION

The following instructions are a generic guide to installing rear-end components. Please navigate to a specific product page for more in-depth instructions if you require a more specific, step-by-step guide



# INSTALLATION INSTRUCTIONS

\*\*\*Take this product to a licensed professional if you are hesitant about the installation process!\*\*\*

The following instructions apply to the listed components below:

- HD Rear Coil Springs (1.5", 2.5", 3.5", 4.5")
- Rear Adjustable Track Bar
- Rear Control Arms (Overland+ or Premium)
- Rear Bump Stops
- Rear Sway Bar End Links

**The following instructions provide a basic guide for installing the rear-end components for the mid-arm lift kit!**

If you purchased items separately or swapped in other components, your installation process will vary.

We strongly recommend having basic mechanic's hand tools, sockets, wrenches, vehicle jacks and stands, and other common tools readily available. Installing an aftermarket lift kit is a detailed process, and having the right tools on hand will ensure a smoother installation.

**As always, feel free to contact us at any point during your installation - you can count on us to help!**

# INSTALLATION INSTRUCTIONS

18. Move the axle stands to the rear axle and position them on either side for support. Remove the tires for additional clearance.



Figure 19: Vehicle rear axle supported by lift and jack stands

# INSTALLATION INSTRUCTIONS

19. Remove the rear bumper/wheel-well fender liners using an 8mm socket. There are 3 small screws per side. Save the liners and hardware. You will need to remove them to access the rear upper shock bolts.

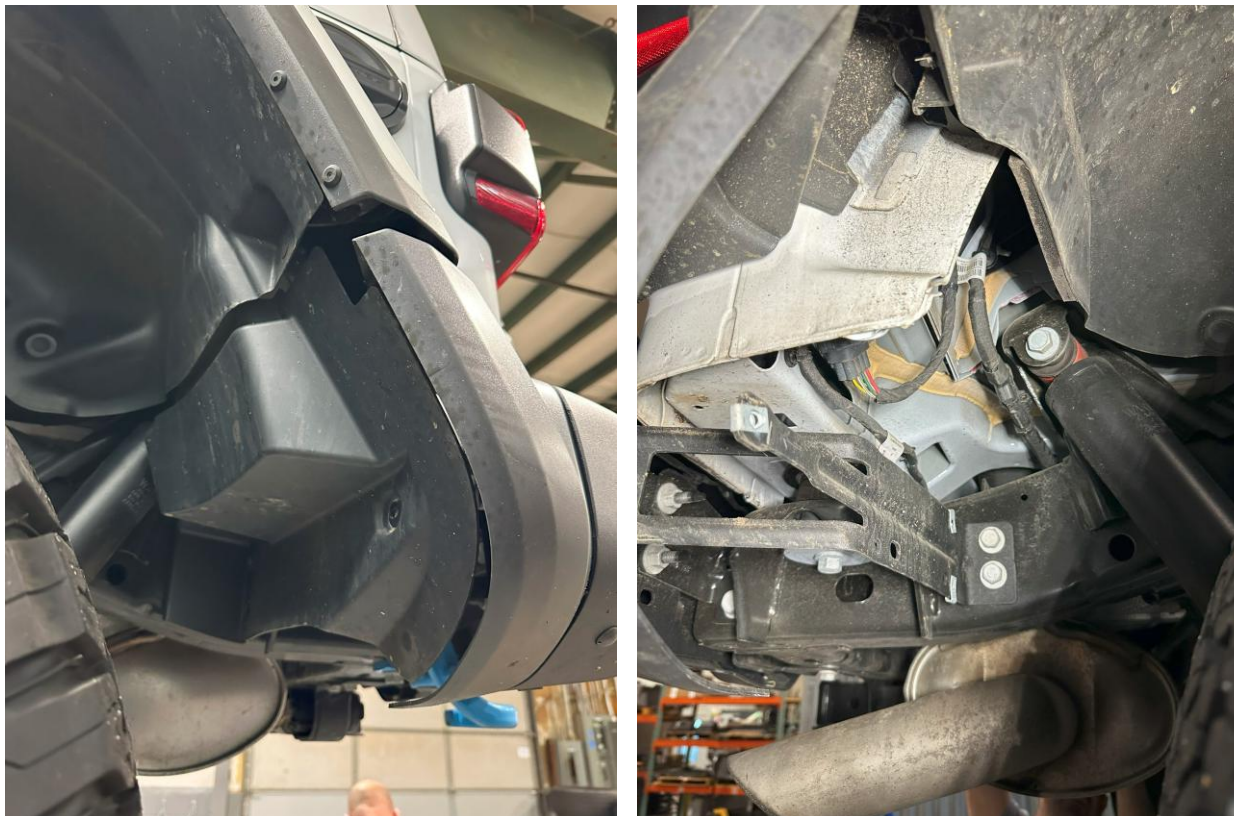


Figure 20: Rear bumper fender before and after removal

# INSTALLATION INSTRUCTIONS

20. Remove the rear shocks. Remove the lower shock bolts using an 18mm socket. Save the hardware and put it off to the side. Move to the top of the shocks and remove the top shock bolts using an 18mm socket. It may be hard to get to, so push the fender liner out of the way and use a socket extension.



Figure 21: Rear passenger and driver-side shocks removed

# INSTALLATION INSTRUCTIONS

21. Remove the factory rear sway bar end links. The socket size may vary depending on which vehicle, year, or aftermarket components you may already have installed. Remove the upper and lower bolts on both sides. You will **NOT** be re-using the hardware. **Remove the differential harness and breather hose. Be gentle with the clip, pull the lock-tab out first then slowly wiggle it off the sensor.**

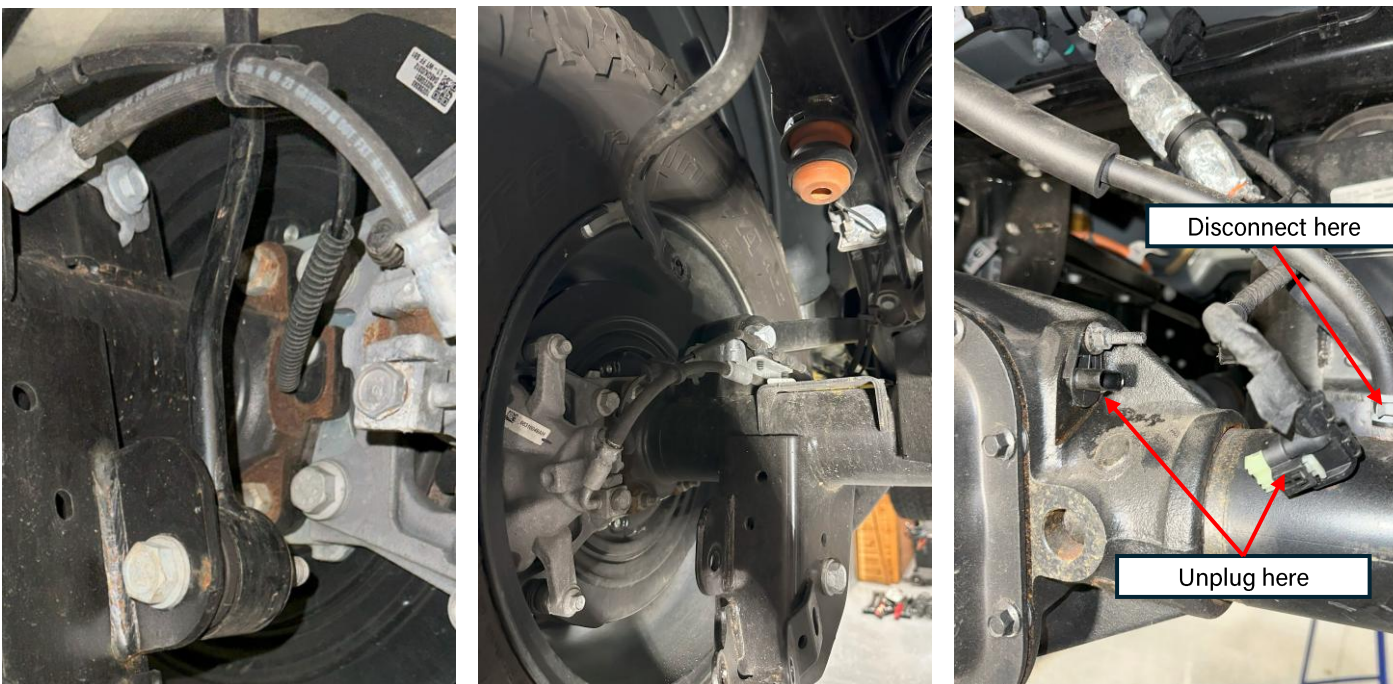


Figure 22: Rear sway bar end link before and after removal, and differential wiring harness removed

# INSTALLATION INSTRUCTIONS

22. Remove the factory rear track bar. Start with the frame bracket bolt (21mm) and then the axle bolt (21mm). Save all factory hardware, as it will be reused.

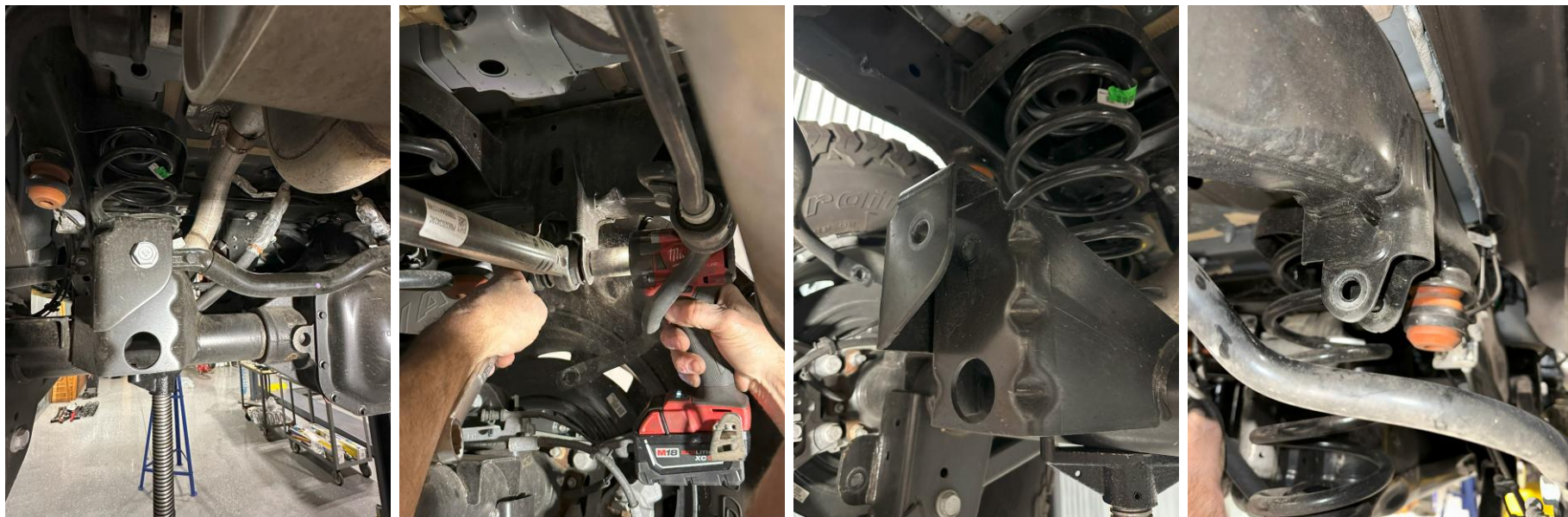


Figure 23: Rear track bar bolt locations before and after removal

# INSTALLATION INSTRUCTIONS

23. Completely remove the wire bracket holding the emergency cables and ensure there is enough slack in the emergency brake cables for an axle-droop. You will not be re-using the wire bracket.



Figure 24: Emergency cable bracket removed

# INSTALLATION INSTRUCTIONS

24. Loosen all 8 rear control arm bolts, but **do not remove at this time.** You will need 18mm, 21mm, and 24mm sockets. **Make sure that the axle remains supported. Try to minimize any axle shift that may occur during this process.**

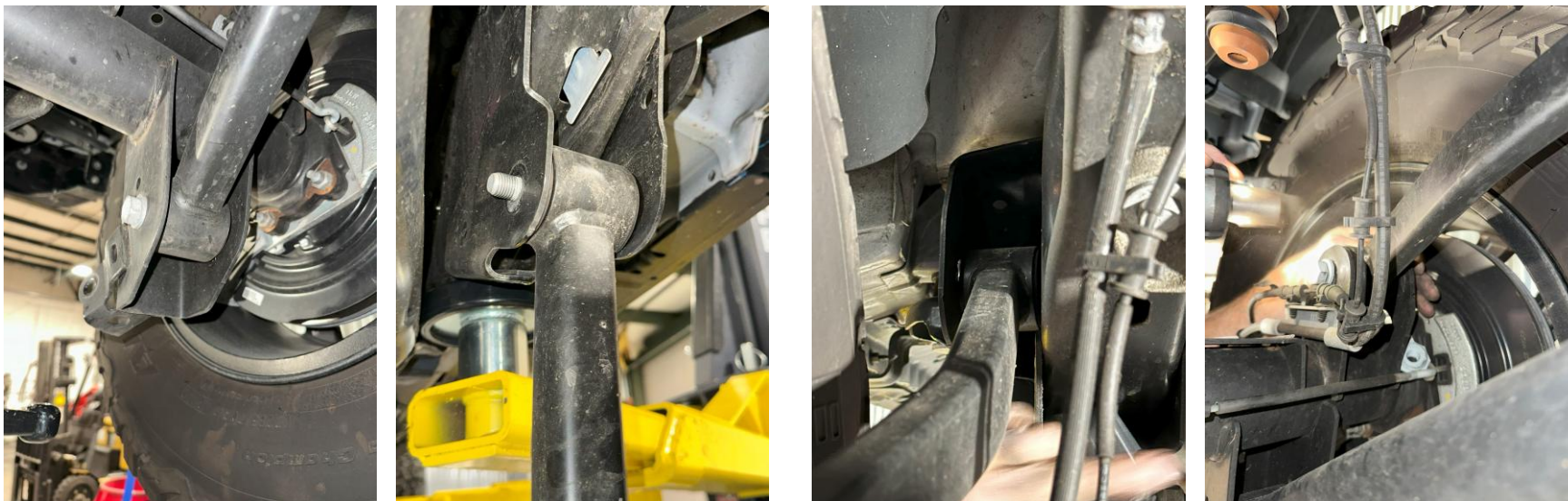


Figure 25: Rear control arm bolt locations (2 arms each side, 4 bolts per side, or 8 bolts total)

# INSTALLATION INSTRUCTIONS

25. Carefully droop the axle by lowering the supporting jack stands (or raising the vehicle) and remove the factory springs. Using the OEM spring boot, install the new springs. Complete both sides at this time. Then, install the new springs. **The last two digits etched on the HD rear coils should read xxxxx56.** Our HD coils are **NOT** side-specific. If you are installing HD coils on your vehicle, you do not need to worry about rear left or right-side coil installation.

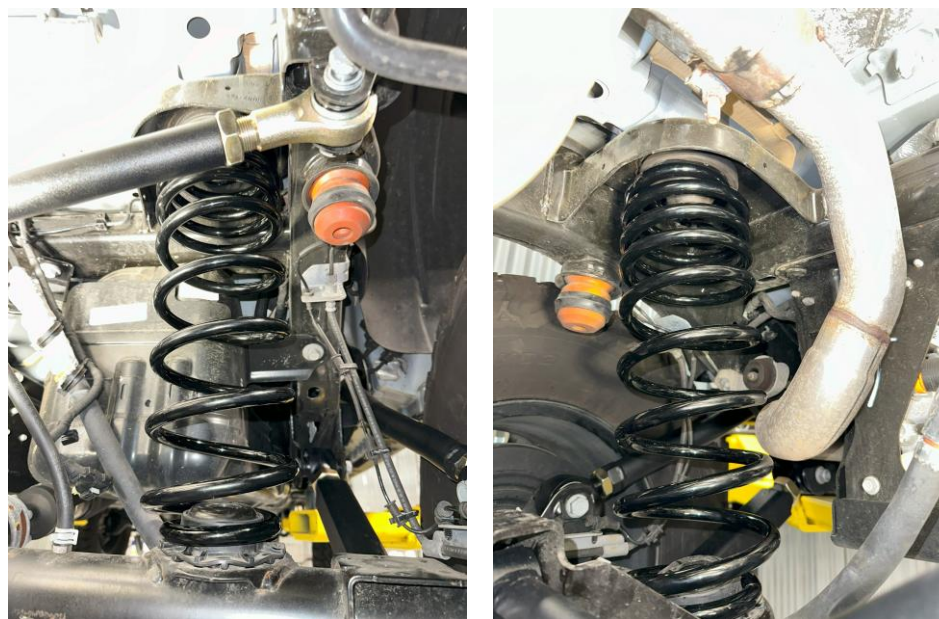


Figure 26: Axle drooped with old springs removed, and bump stops installed

# INSTALLATION INSTRUCTIONS

26. Re-install the rear shocks or install new shocks. Install the upper bolt first, then the lower axle bolt. Use original hardware, unless your new shocks came with new hardware. If the aftermarket shocks came with a piggyback reservoir, install them at this time.

**Do not torque yet.**

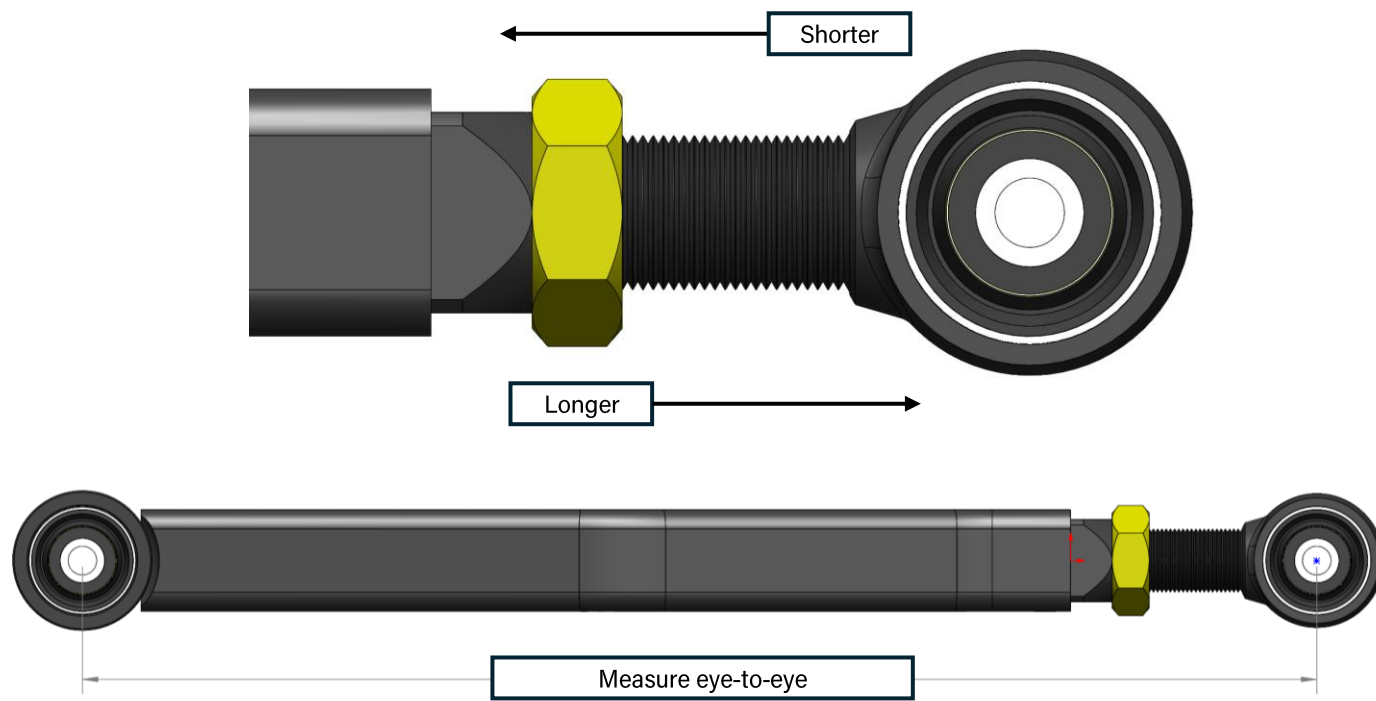


Figure 27: Rear shock top and bottom bolt installed loosely

# INSTALLATION INSTRUCTIONS

27. Determine the appropriate length of the new control arms based on your vehicle's ride height and your desired pinion and caster angles. Use the lengths provided at the beginning of these instructions as a starting point or reference our **JL Suspension Quick Guide**. **For this lift kit, the rear uppers are round, and the rear lowers are square.**

Adjust the end-forging by screwing it in or out. **Measure the length from eye-to-eye, or center of bushing to center of bushing.** When the desired length is met, spin the jam nut down to the control arm to lock the forging into position.



# INSTALLATION INSTRUCTIONS

28. Remove the rear factory control arms **on the driver-side first**. Install the new lower control arm with the original hardware. The adjusters for the lower arms should be located on the frame-side, and the adjusters for the uppers should be on the axle side. Then, install the driver-side upper control arm. **The upper arms are NOT side-specific**, but when installed properly, the bends in the arms should provide clearance for the tires. **See our Control Arm Quick Guide for more information. Do not torque yet.**



Figure 28: New driver-side control arms installed with original hardware

# INSTALLATION INSTRUCTIONS

29. Remove the rear factory control arms **on the passenger side**. Install the new lower control arm with the original hardware. The adjusters for the lower arms should be located on the frame-side, and the adjusters for the uppers should be on the axle side. Then, install the driver-side upper control arm. **The rear arms are NOT side-specific**, but when installed properly, the bends in the upper arms should provide clearance for the tires. **See our Control Arm Quick Guide for more information. Do not torque yet.**

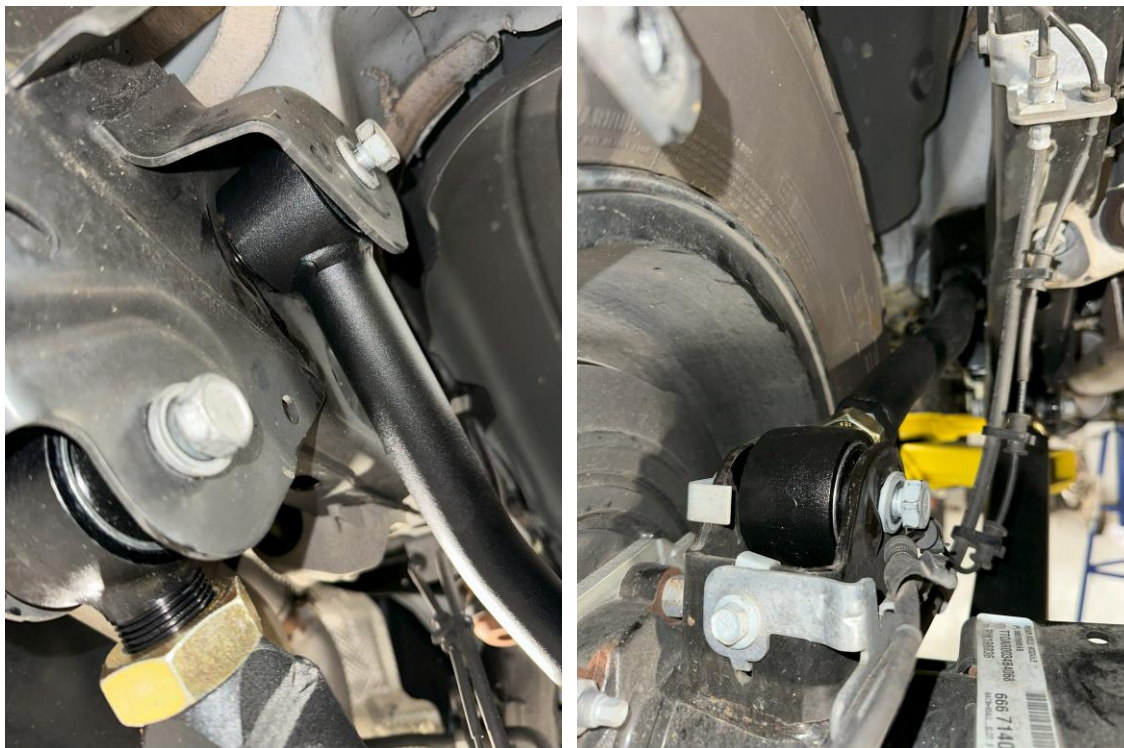


Figure 29: New control arms installed with original hardware

# INSTALLATION INSTRUCTIONS

30. With the new coils in, visually confirm that the emergency brake cables have enough slack for your specific setup.



Figure 30: Emergency cable bracket removed

# INSTALLATION INSTRUCTIONS

31. Cut the new sway bar rods to the recommended length at each end following the **Sway Bar Quick Guide**. You can find this quick guide on our website, or at the end of these instructions. Assemble the sway bar end-links and use a 6mm hex key and an 18mm wrench to install. **Do not torque yet.**

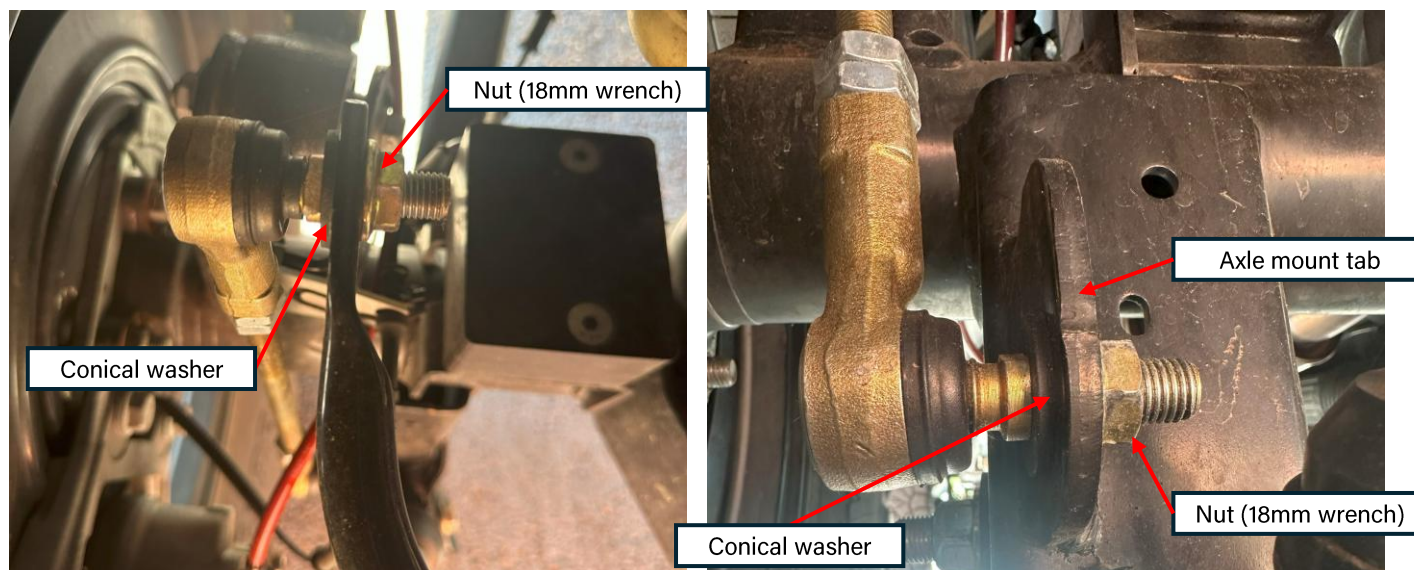


Figure 31: Sway bar end links installed on driver-side

**\*\*\*Conical washers installed with the concave side facing towards the sway bar or tab, NOT the link!\*\*\***

# INSTALLATION INSTRUCTIONS

32. Install the new rear track bar. Follow the **JL Suspension Quick Guide** for more information like starting lengths based on coil height. You can find this quick guide on our website under any JL lift kit listing, or at the end of these instructions.

**Do not torque yet. Install the axle bolt first, then the frame bolt using the original hardware.**

**Install the rear track bar with the hump in the bar over top of the rear differential. You may need a ratchet strap to align the hole on the vehicle side, and recenter the axle.**



Figure 32: New rear track bar installed

# INSTALLATION INSTRUCTIONS

33. Install the rear bump stops. **Depending on lift height, you will install either the stackable 1-2" tall stops, or the 3" tall stops.** You do not need to remove the coils to install the bump stops. You will want to articulate the vehicle to determine if you need more bump stop based off of lift height, tire size, and shock travel.

**Our 3" Bump Stops use a 9/16" wrench and socket.**  
**Our 1-2" Stackable Bump Stops use a 7/32" hex key and a 9/16" wrench.**



Figure 33: Bump-stops (3" tall and 1-2" tall stackable bump-stop options)

**TIP:** Tape the nut to the wrench to get the threads started.

# INSTALLATION INSTRUCTIONS

34. Reinstall the rear bumper/wheel-well fender liners using an 8mm socket. Use the original 3 screws per side.



Figure 34: Rear bumper fender reinstallation

# INSTALLATION INSTRUCTIONS

35. Reinstall the front axle wiring harness and breather tube.

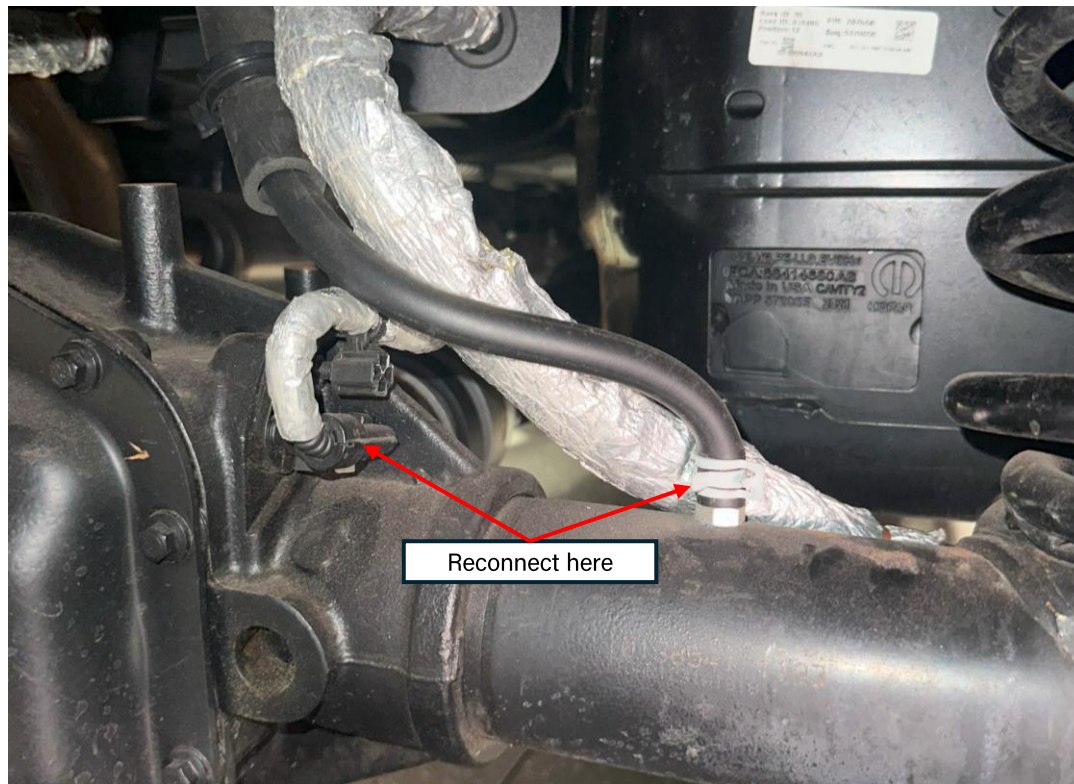


Figure 35: Differential wiring harness and breather tube reconnected

# INSTALLATION INSTRUCTIONS

36. Reinstall the front cross bar member using an 18mm socket. **Then, reinstall all four tires, do not torque yet.**

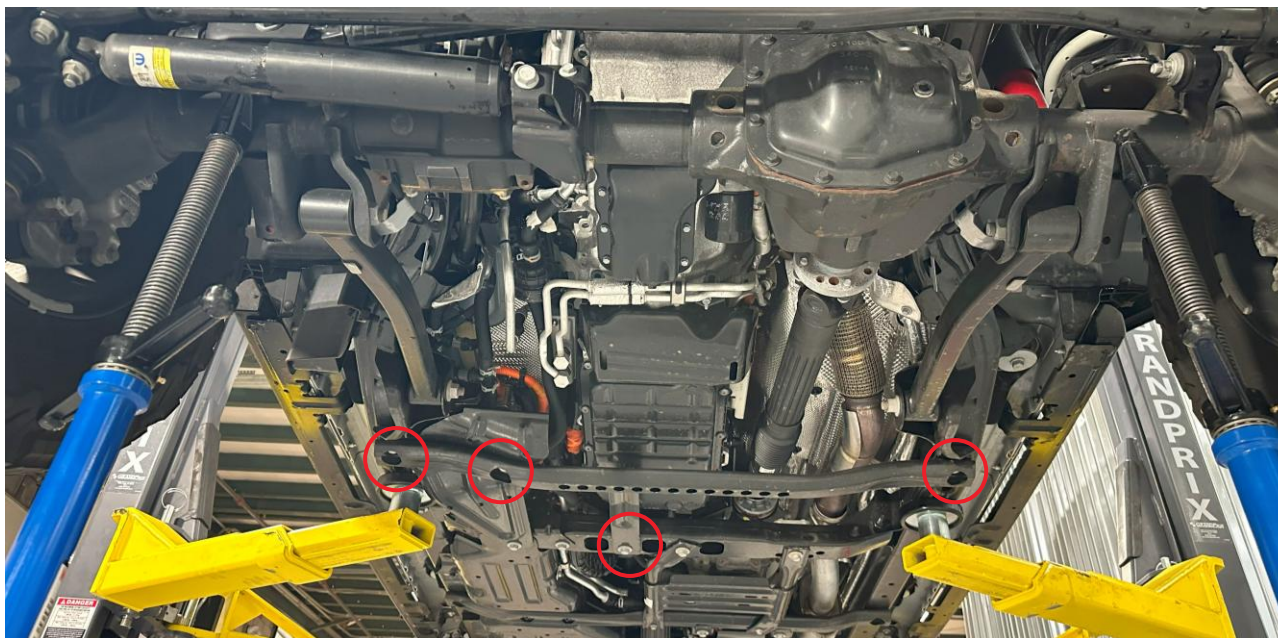


Figure 36: Transmission guard skid plate/cross bar to be reinstalled (JL 4XE)

# INSTALLATION INSTRUCTIONS

37. Refer to Table 2 for recommended front and rear track bar starting lengths applicable to this lift kit. The following lengths are recommendations and should only serve as a starting point for axle positioning. **The following measurements are given as "eye-to-eye" lengths.**

Table 2: COR Track Bar Length Specifications

Track Bar ID / Location	Minimum	1.5" Lift	2.5" Lift	3.5" Lift	4.5" Lift	Maximum
4509100 Front Track Bar	$33 \frac{9}{16}$ "	$33 \frac{15}{16}$ "	$34 \frac{1}{8}$ "	$34 \frac{1}{4}$ "	$34 \frac{7}{16}$ "	$35 \frac{3}{8}$ "
4509110 Rear Track Bar	$37 \frac{3}{8}$ "	$37 \frac{3}{4}$ "	$37 \frac{7}{8}$ "	38"	$38 \frac{3}{16}$ "	$39 \frac{1}{4}$ "



4509100 Front Track Bar



4509110 Rear Track Bar

# INSTALLATION INSTRUCTIONS

38. Lower the vehicle back to the ground, and let it settle under its own weight. Verify the front and rear axle track.

**Because all vehicles are different, Clayton Off Road only provides recommended lengths for all adjustable arms and track bars. These values should only serve as starting points, as fine-tuning of these adjustments is required to dial in the vehicle's alignment and ride quality.**

To check the axle track, measure from a fixed point on the tire tread to another fixed point on the frame (or fender). You may use a straight-edge flush up against the tire and use it as a marker. This will allow you to pinpoint which direction the axle may need to go. Check both sides and compare both measurements. If one side is shorter or longer, adjust the track bar accordingly by removing the adjuster-end bolt and spinning the adjuster in/out half the difference of the two measurements. See the example below:



Axle track (rear driver side)



Axle track (rear passenger side)

**In the case above, the axle was shifted to the driver's side nearly  $\frac{1}{2}$ " more than the passenger's side.**

This means that the rear track bar should be **shortened by  $\frac{1}{4}$ "**, or until both measurements are equal.

# INSTALLATION INSTRUCTIONS

39. **With the vehicle still under its own weight**, torque the front and rear track bar bolts (axle and frame end). Refer to Table 3 below for recommended torque specifications of each bolt, as well as the wrench size.

Table 3: COR Track Bar Torque Specifications

Suspension Bolt Location	Wrench Size	Torque (lb-ft)
Front Track Bar Bolt, Frame Bolt	21mm	130
Front Track Bar Bolt, Axle Bolt	21mm	130
Rear Track Bar Bolt, Frame Bolt	21mm	90
Rear Track Bar Bolt, Axle Bolt	21mm	90

# INSTALLATION INSTRUCTIONS

40. With the vehicle **still under its own weight**, verify the front and rear caster/pinion angles. Verify that the caster angle at the front axle falls between 4.5-6 degrees. For the rear pinion angle, verify that the axle falls between 4.5-6 degrees.

**Because all vehicles are different, Clayton Off Road only provides recommended lengths for all adjustable arms and track bars. These values should only serve as starting points, as fine-tuning of these adjustments is required to dial in the vehicle's alignment and ride quality.**

If your angles are out of specification of this range, remove the upper control arm bolts (one arm at a time) and spin the adjuster in or out. **Spin the upper arms equally, starting with 1-2 full rotations at a time.** Re-measure the angle after each adjustment to make sure you do not overshoot/undershoot the specified range.

You may take a baseline measurement at the top of the c-knuckle, or on the direct top of the ball joint (assuming the vehicle is parked on a flat surface). This measurement location should give you a good idea of what your current angles are; however, it is highly recommended that you visit an alignment shop to verify these angles and **then adjust accordingly.**

**Finally, please note that the lower control arms should be adjusted to center the tires in the wheel well, also known as axle positioning.** You will want to fully articulate the axles and check that there is no rubbing occurring on the inner fender liner. If rubbing occurs, bring the axle in or out by adjusting the lower control arms evenly.

# INSTALLATION INSTRUCTIONS

41. Please refer to Table 4 below for helpful control arm torque specifications, as well as helpful wrench sizes.

**NOTE:** Some of Clayton Control Arms come with upgraded hardware. Table 4 displays the torque specification for **OEM** hardware. **Verify the bolt torque specification for any upgraded control arm hardware in the individual control arm instructions found on our website.**

Table 4: OEM Control Arm Hardware Torque Specifications

Suspension Bolt Location	Wrench Size	Torque (lb-ft)
Front Upper Control Arm, Frame Bolt (Factory Size)	18mm, 21mm	80
Front Upper Control Arm, Axle Bolt (Factory Size)	18mm	80
Front Lower Control Arm, Frame Bolt (Factory Size)	21mm, 24mm	180
Front Lower Control Arm, Axle Bolt (Factory Size)	21mm, 24mm	180
Rear Upper Control Arm, Frame Bolt (Factory Size)	21mm	120
Rear Upper Control Arm, Axle Bolt (Factory Size)	21mm	95
Rear Lower Control Arm, Frame Bolt (Factory Size)	21mm	90
Rear Lower Control Arm, Axle Bolt (Factory Size)	21mm	90

# INSTALLATION INSTRUCTIONS

42. Refer to Table 5 below for helpful torque specifications related to the front and rear shocks.

**NOTE:** Some aftermarket shocks come with upgraded hardware. Table 5 displays the torque specification for **OEM** shock hardware. **Always verify the bolt torque specification for any upgraded hardware before torquing.**

Table 5: OEM Shock Torque Specifications

Suspension Bolt Location	Wrench Size	Torque (lb-ft)
Front Upper Shock Bolt, Frame Bolt	18mm	80
Front Lower Shock Bolt, Axle Bolt	18mm	75
Rear Upper Shock Bolt, Frame Bolt	18mm	80
Rear Lower Shock Bolt, Axle Bolt	18mm	75

# INSTALLATION INSTRUCTIONS

43. Refer to Table 6 below for helpful torque specifications related to the sway bar end links, as well as jam nuts at the track bars and track bars.

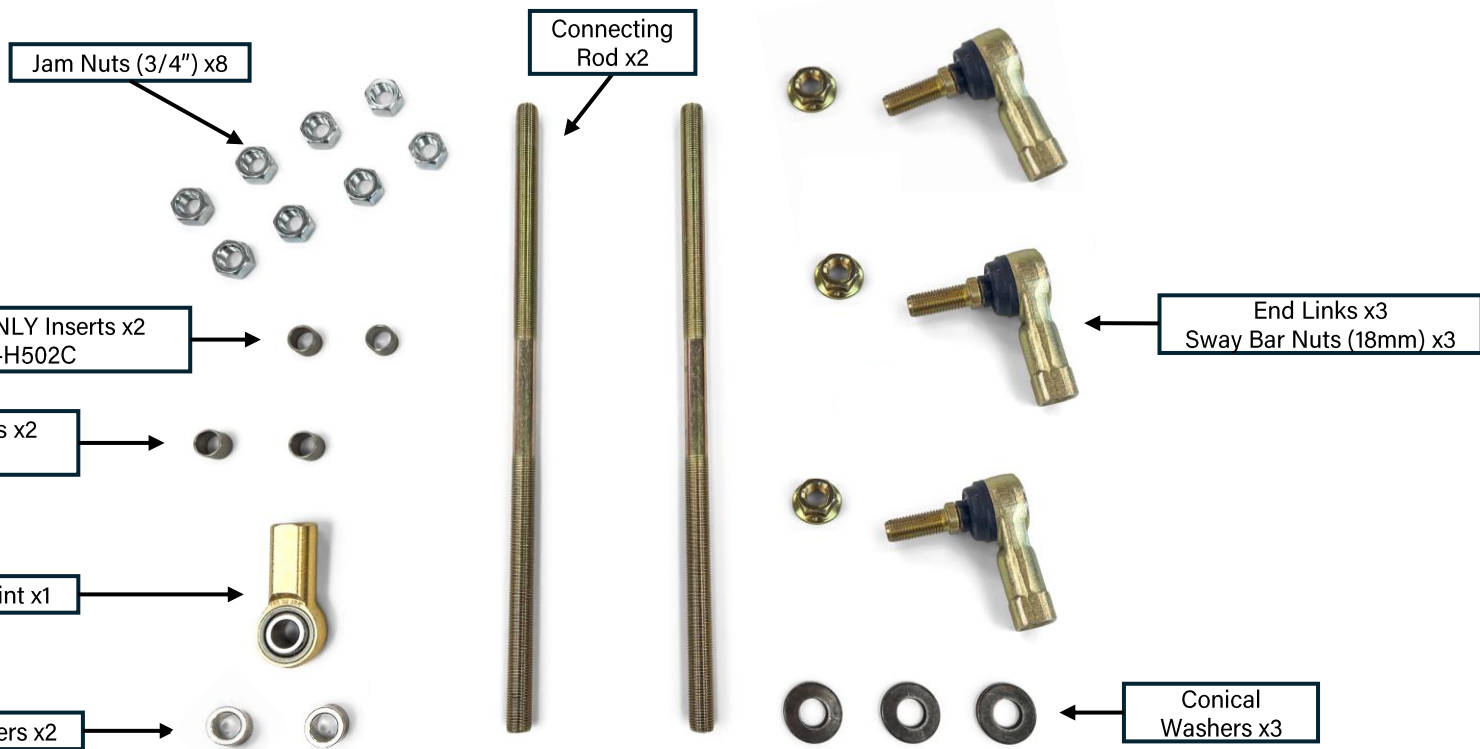
Table 6: COR Sway Bar End Link and Jam Nut Torque Specifications

Suspension Bolt Location	Wrench Size	Torque (lb-ft)
Sway Bar End-Link Nuts	18mm	100
Sway Bar Jam Nuts	3/4"	64
Lower Control Arm Adjuster Jam Nuts	1-7/8"	Very Tight
Upper Control Arm Adjuster Jam Nuts	1-1/2"	Very Tight
Track Bar Jam Nuts	1-1/2"	Very Tight

# SWAY BAR QUICK GUIDE

\*\*\*Please review the following information so you can become familiar with our sway bar products\*\*\*

\*\*\*Continue to the next page for important installation notes\*\*\*



★ 2024+ Rubicon models with the solid version of the sway bar will need to utilize bushing inserts PN-AMP-HDW-H502C, which are inserted directly into the factory sway bar as shown on the next page

★ 2024+ non-Rubicon models with the hollow sway bar will need to utilize bushing inserts PN-AMP-HDW-H502B, which are inserted directly into the factory sway bar as shown on the next page

\*\*\*Bushing inserts are NOT necessary on 2018-2023 models\*\*\*

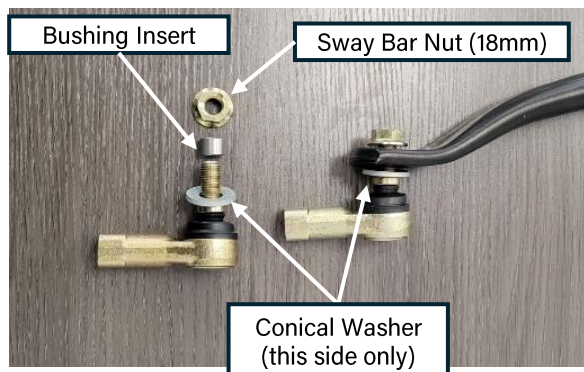
# SWAY BAR QUICK GUIDE

**NOTE:** Jeep Gladiator (JT) and Jeep Wrangler (JL) Front Sway Bar End Links are intended to come with **three** studded rod ends and **one** single Heim Joint (as pictured on the previous page).

- **The single Heim Joint is to be used on the passenger side at the axle (bottom) for proper clearance with the factory double-shear bracket, meaning no additional modifications are necessary.**

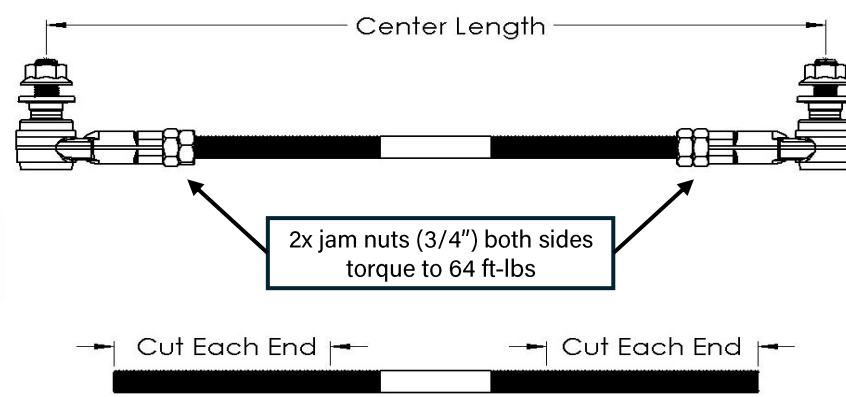
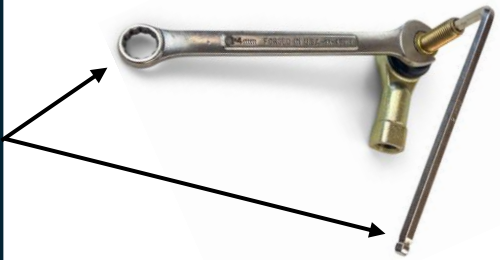
**NOTE:** Conical washers provide an even greater surface area through beveled sides, distributing the force of the tightening nut while reducing vibrations and preventing the nut from coming loose.

- **Conical washers should be used on all models and years, with the concave side curving inward towards the sway bar.**



Lift Height	Stock	1.5" Lift		2.5" Lift		3.5" Lift		4.5" Lift	
Component		Center Length	Cut Each End	Center Length	Cut Each End	Center Length	Cut Each End	Center Length	Cut Each End
JK Front Sway Bar Link	5.250	8-1/4"	3-7/16"	9-1/4"	2-15/16"	10-1/4"	2-7/16"	11-1/4"	1-15/16"
JK Rear Sway Bar Link	8.750	10-3/4"	2-3/16"	11-3/4"	1-5/8"	12-3/4"	1-3/16"	13-3/4"	5/8"
JL Front Sway Bar Link	5.063	8-1/4"	3-7/16"	9-1/4"	2-15/16"	10-1/4"	2-7/16"	11-1/4"	1-15/16"
JL Rear Sway Bar Link	8.750	10-3/4"	2-3/16"	11-3/4"	1-5/8"	12-3/4"	1-3/16"	13-3/4"	5/8"
JT Front Sway Bar Link	5.063	8-1/4"	3-7/16"	9-1/4"	2-15/16"	10-1/4"	2-7/16"	11-1/4"	1-15/16"
JT Rear Sway Bar Link	10.625	12-5/8"	1-1/4"	13-5/8"	3/4"	14-5/8"	1/4"	15-5/8"	0"

Our newly improved end link design allows the installer to hold the stud with either a 6mm hex key or a 14mm wrench to tighten the nut. Either option works, as long as the sway bar end link nut is torqued to **90-100 ft-lbs**



# INSTALLATION INSTRUCTIONS

44. Tighten down the jam nuts on the upper and lower control arms. Use a 1-7/8" wrench for the lower control arm jam nuts, and a 1-1/2" wrench for the upper control arm jam nuts and track bars. Use a breaker bar to gain additional leverage. Tighten all jam nuts down as tight as humanly possible.

Please note that not all wrenches are created with the same tolerances. If your wrenches are too loose around the jam nut, Clayton Off Road offers tight, wrap-around wrenches for purchase. Please search for the wrenches using the SKU's below.



Figure 37: COR Wrench-ends for control arm jam nuts and track bars (COR-2500125, COR-2500100)

# INSTALLATION INSTRUCTIONS

45. Congratulations, you've completed our Short Arm Lift Kit Installation. Please see the post-installation checklist and confirm you have completed all of the steps before driving your vehicle.



## **POST-INSTALLATION CHECKLIST:**

- Differential sensors/hoses (front and rear) are plugged back in
- Brake lines are put back into place and not damaged or stretched
- Caster set somewhere between 4.5-6 degrees
- Axles properly centered in wheel-well (axle track and position)
- All hardware is torqued to specification (see Tables 3-6)
- Control arm jam nuts are as tight as possible
- Sway bar end links are the proper length and tightened to specification
- Lug nuts are torqued to the manufacturer's specification
- A licensed shop has professionally aligned the vehicle
- Retorque all hardware after 500 miles of driving

